



The Update in Brief

February 24, 2025

- Bengal Giving Day | Become an Ambassador for UHP. (Page 1)
- Announcements & Opportunities | Spring Career Fair; INL Information Event; Call for Bengal Visit Day Volunteers; Job, Internship, and Research Program Opportunities; Opportuni-Tea Submissions; CAL Travel Grant; ISU Research & Creative Works Symposium; Benny Awards (Pages 2-5)
- UHP Events | Butterfly Making; Mavity Shaw's Junior Recital (Page 6)
- ISU Events | ISU Band Concert; ISU's Got Talent; Know Your Rights Seminar; Women's Basketball (Pages 6-7)
- Additional Informational Flyers

**BENGAL
GIVING
DAY**

MARCH 18-19



Help us spread the word about this year's Bengal Giving Day and encourage support for UHP Opportunity Scholarships.

You can become an ambassador for the UHP Bengal Giving Day campaign. BGD is an annual online fundraising campaign to support ISU and its students by raising as much as possible to help ISU achieve its mission of providing exceptional education, research and outreach.

Donations made during BGD will fund Opportunity Scholarships and go directly to UHP students!

Encourage your family members and friends to become a BGD Ambassador and formally register at bengalgivingday.com/pages/get-involved-2055. They will receive resources to help them spread the word.

Announcements & Opportunities



Spring Career Fair

Wednesday, February 26 | 10 am - 2 pm | Ballroom, PSUB

Looking for a job or internship? Come to the Spring Career Fair where employers will be offering full-time, part-time, summer, and internship opportunities. A career fair is an opportunity for you to present yourself professionally in person to a potential employer, while showcasing your communication skills. The keys to a successful job fair experience are preparation and follow up. Here is a checklist to help you get prepared!

1. Research the list of participating employers through [Handshake](#)
2. Get your resume reviewed by a Career Center career counselor
3. Set up an appointment with a Career Center career counselor for a mock interview
4. Make sure you dress professionally and bring copies of your resume

Don't forget to ask for business cards at the fair so you can follow up with thank you notes.

FREE Professional headshots will be provided - perfect for your LinkedIn page!

First 100 students will receive FREE Bengal Socks!

AND all attendees who fill out a post fair survey will be entered to win a FREE JBL Speaker!

Refreshments will be provided!

[Schedule Resume Appointment](#)

[List of Employers Attending the Career Fair](#)

[Dress for Success Outfit Inspo](#)

Bridging Futures: INL & ISU TRIO/CAMP Collaboration Event

Tuesday, February 25 | 1 - 5pm | Wood River Room, PSUB

This event will provide students with information about opportunities at INL, along with [pizza and drinks!](#)

Agenda:

1 - 2pm | Overview of available internships at INL, application process, and benefits.

2:15 - 2:45pm | Presentation on the Skill Bridge program and opportunities for veterans at the INL.

2:45 - 3:15pm | Attendees can get their resumes reviewed by INL representatives for feedback.

3:15 - 5pm | Dedicated time where attendees can receive help with their internship applications.

Announcements & Opportunities Continued



**BVD
2025**

Volunteer for Bengal Visit Day - Saturday, April 12

As the largest event we host on campus, this open-house style event allows students and guests to explore campus completely at their own pace. During the event, they have the opportunity to visit departments, hear about our different resources available, chat with our student clubs/organizations, take a campus or housing tour, and so much more! We will need volunteers in all of these areas along with general volunteers (current students or faculty/staff) that can assist with information tables, distribution of materials, bus guides, set up/clean up, etc.

Register Here: [Volunteer Sign-Up](https://isu.co1.qualtrics.com/jfe/form/SV_0BdAFZ4qnMWZ3ca)

https://isu.co1.qualtrics.com/jfe/form/SV_0BdAFZ4qnMWZ3ca

Bengal Newspaper Book Bundle Survey

The Bengal Newspaper would like to hear from YOU about your thoughts and experiences with the ISU Book Bundle. Take the survey to voice your opinion.

Student Survey: <https://forms.gle/9nSEm8bqWFtiMtUd6>

Faculty/Staff Survey: <https://forms.gle/bfreGNwysFRBY5hn8>



North American Language and Culture Assistants Program (NALCAP)



The North American Language and Culture Assistants Program (NALCAP). American college students and graduates - who are native-like speakers of English - partner with elementary and secondary schools in Spain to bolster language programs, as language assistants (TAs) under the supervision and guidance of teachers in Spain.

NALCAP falls under the category of public diplomacy programs. As a language assistant, you will be fulfilling the role of a cultural ambassador as you advance English language learning and mutual understanding through cultural exchange.

As such, your role is to encourage students of all ages in Spain to broaden their knowledge of your language and culture.

Placements are offered across Spain, in practically every city and town in the country, running from October 1st to May 31st for most assignments. NALCAP recipients teach 14 to 16 hours per week and receive a monthly stipend along with medical insurance.

NALCAP offers recipients the opportunity to immerse themselves in the language and culture of Spain while sharing the language and culture of the United States with students in Spain, as well as a tremendous opportunity for professional and personal growth.

Deadline to Apply is March 26, 2025

For more information and to apply go to

<https://www.educacionfpydeportes.gob.es/eeuu/convocatorias-programas/convocatorias-eeuu/nalcap.html>

Announcements & Opportunities Continued

FORWARD PSU INTERNSHIP



FORWARD PSU is a transformative 15-month program designed to support undergraduate students committed to addressing healthcare inequities and improving access for underserved Indigenous communities. This includes Native American, Alaska Native, Native Hawaiian, Pacific Islander, First Nations (Indigenous to Canada), and Indigenous peoples of Mexico, Central, or South America. This program offers:

- Clinical Placements: Hands-on experience with clinical teams.
- Mentorship: Multi-tiered mentorship with clinical, career, and peer mentors.
- Culturally Responsive Curriculum: Workshops that provide professional development.
- Financial Support: Monthly stipends to support student participation.

Students will gain critical healthcare skills, build professional networks, and prepare for graduate/professional pathways such as medical, dental, or public health programs.

The application deadline is February 28th, 2025.

You can learn more about the program including eligibility requirements, financial support, essay questions, and more on the program's site sites.google.com/pdx.edu/forward-psu/apply.



Summer Research Program

This intensive paid 10-week summer research opportunity provides mentoring and research experiences while allowing scholars to preview graduate school life. Students with a strong interest in graduate programs are encouraged to apply, as are those from populations traditionally underrepresented in graduate education.

Programs include: Applied Plant Systems, Beneficial Insects & Bacteria, Biomedical Engineering, Chemistry, Crop-to-Food Innovation, Plant Pathology, Redox Biology, Quantum Materials, and more.

The program runs from June 2 to August 7, 2025.

Deadline to apply is March 1, for more information and to apply go to summerprogram.unl.edu/

Call For Creative Submissions for the Opportuni-Tea Silent Auction



The annual Honors fundraiser, [An Opportuni-Tea](#), will be held on Saturday, April 5. A silent auction of donated items raises funds that provide scholarships for students in the Honors Program. Donors love to bid on creative works produced by Honors Students.

If you are interested in donating an original piece of creative work or a service, please fill out the [Opportuni-Tea Creative Work Donation Form](#)

Want to Share Your Honors Story?

Call For Video Participation for the Opportuni-Tea

The annual Honors fundraiser, [An Opportuni-Tea](#), will be held on Saturday, April 5. If you are interested in being included in a video about Honors scholarships or being an Honors student for the event, please fill out this form.

[Opportuni-Tea Video Form](#)



Announcements & Opportunities Continued

The Palouse Review is Accepting Literary Submissions



The Palouse Review is the biannual arts and academics journal of the Washington State University Honors College. We accept submissions from current and former honors students from throughout the Western Regional Honors Council. Our editors are looking for carefully crafted, evocative work that demonstrates the literary, artistic, and academic excellence of our broader honors community.

The submission deadline for the Spring 2025 edition is March 23.

For more information or to submit your work, go to: palousereview.wsu.edu

2024/2025 Undergraduate Student Travel Grant

The College of Arts and Letters (CAL) seeks proposals for travel funds from full-time undergraduate students in the college. Proposals will be accepted until funds are expended. Proposals must be submitted prior to the dates of travel. Funds for travel MUST be expended by May 2, 2025, and all paperwork completed by June 2, 2025.

Details about about submitting a proposal can be found in the linked document below. Contact Carrie Page (carriepage@isu.edu) with questions.

[CAL 2024/2025 Undergraduate Student Travel Grant](#)

Call For Abstracts: ISU 2025 Research & Creative Works Symposium

The ISU Research and Creative Works Symposium on Wednesday, March 19, 2025 and is an opportunity for undergraduate and graduate students of all disciplines and degree levels to present their in-progress or completed scholarly or creative works for a chance to win big bucks!

To help answer any questions and show examples from previous years, we will be hosting 45 Minute Insider Sessions on Jan 28 and Feb 21

Abstract submissions open January 21 and close February 26.

Visit www.isu.edu/researchsymposium/ for more information and to submit an abstract.

NOMINATIONS ARE OPEN FOR... THE BENNY AWARDS



UNDERGRADUATE STUDENT LEADER OF THE YEAR

GRADUATE STUDENT LEADER OF THE YEAR

ROAR BENGAL ROAR (SPIRIT AWARD)

FACULTY MEMBER OF THE YEAR

STAFF MEMBER OF THE YEAR

EXEMPLARY SERVICE AWARD

ALUMNUS OF THE YEAR

OUTSTANDING EVENT OF THE YEAR

INSPIRATIONAL BENGAL OF THE YEAR

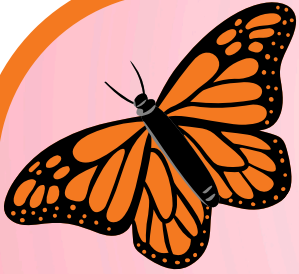
STUDENT ORGANIZATION OF THE YEAR

STUDENT AFFAIRS AWARD OF DISTINCTION

STUDENT ORGANIZATION ADVISOR OF THE YEAR

DEADLINE FOR NOMINATIONS IS FEBRUARY 28, 2025 WWW.ISU.EDU/BENNYAWARDS/

February UHP EVENTS



BUTTERFLY MAKING

If you're applying for an Opportunity Scholarship, increase your chances of being funded by creating a butterfly ornament to display at the Opportuni-Tea. All supplies are provided!

Monday, February 24 | 4 - 6pm
Honors Lounge (outside REND 305)



Mavity Shaw's Junior Recital

Support Mavity and Enjoy Musical Works from the Baroque to the 20th Century !

Saturday, March 1st | 7:30pm
Goranson Hall, Fine Arts Building

Plan for future UHP Events at isu.edu/honors/current-students/honors-student-events/

ISU Wind Ensemble & Civic Band Concert

Come hear what the Band students have been working on!

Weds, Feb 26 | 7:30 - 9:30pm
Jensen Hall
Stephens Performing Art Center



ISU's Got Talent!



Thurs, Feb 27 | 7 - 9pm
Ballroom
Student Union Building

Know Your Rights Seminar



Weds, Feb 26 | 7:00pm

Speaker: Mary Shea

Topics Include:

Reproductive Rights

First Amendment Rights

Q & A Session

Little Wood Room, PSUB



ISU Women's Basketball

Thurs, Feb 27 @ 7pm

vs. University of Idaho

Sat, Mar 1 @ 2pm

vs. Eastern Washington

Reed Gym



Idaho State
University

University
Honors Program

www.isu.edu/honors

Dr. Sarah Robey | Honors Director | sarahrobey@isu.edu

Conner Suddick | Instructor/Coordinator | connersuddick@isu.edu

Dr. Kathryn Holt | Instructor/Coordinator | kathrynholt@isu.edu

Lori Tapanila | Academic Support | loritapanila@isu.edu



@[idahostatehonors](https://www.instagram.com/idahostatehonors)



@[Idaho State University Honors](https://www.facebook.com/IdahoStateUniversityHonors)



@[Idaho_Honor](https://twitter.com/Idaho_Honor)

BRIDGING FUTURES: INL & ISU TRIO/CAMP Collaboration Event

Tuesday, February 25th, 2025

INL Internship Presentation | 1:00 PM - 2:00 PM

Overview of available internships at INL, application process, and benefits.

Skill Bridge and INL Veterans Program Presentation | 2:15 PM - 2:45 PM

Presentation on the Skill Bridge program and opportunities for veterans at INL.

Resume Review | 2:45 PM - 3:15 PM

Attendees can get their resumes reviewed by INL representatives for feedback and improvement.

Open Internship Application Assistance | 3:15 PM - 5:00 PM

Dedicated time where attendees can receive help with their internship applications.

Pizza and drinks will be provided



KNOW YOUR RIGHTS

Seminar

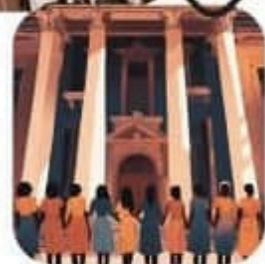


Event Highlights

- Reproductive Rights Explained
- First Amendment Rights: How to use them
- Q&A Session, Future Planning



SPEAKER: MARY SHEA



Idaho State University Pond Student Union Little Wood Room 2nd floor

FEB | 26TH | 2025 | 7PM MST

Hosted by ISU Political Science Club in conjunction with the Pocatello People's Coalition, including members of various organizations like Pocatello Unitarian Universalist Church, Prism Family Medicine, and Mocha Madness

Junior Recital



Lorelei Dowland,
mezzo-soprano



Mavity Shaw,
soprano



Gabriel Beckman,
baritone

March 1st, 2025
7:30pm

Goranson Hall

Featuring works:
Baroque-20th
century

Pianists: Jaden Klein,
Laine Lund and
Professor Michelle Adams

**SPRING
FAIR
FEBRUARY
26 [WED]
10AM - 2PM**



GIVEAWAY

FIRST 100 STUDENTS
WILL RECEIVE BENGAL
SOCKS

**FREE
Professional
Headshots**



IN ADDITION

**All students who attend &
complete our fair survey can
enter our raffle for a chance to
win a JBL Speaker!**



THE BENGAL

NEWSPAPER _____

The Bengal Newspaper would like to hear from YOU about your thoughts on the

BOOK BUNDLE!

Scan the QR code below!



STAFF



STUDENTS

Please use your ISU email address

FORWARD PSU

Fostering Oregon's Workforce in
Advanced and Restorative
Healthcare

Are you interested in addressing healthcare
disparities and improving equity for Indigenous
communities?

WHY JOIN?

- Hands-on **Clinical Placements** with healthcare teams.
- Multi-tiered mentorship to guide your journey.
- Culturally responsive workshops celebrating Native excellence.
- Financial support to ensure your success.

ELIGIBILITY REQUIREMENTS

- Demonstrate interest and enthusiasm for pursuing advanced degrees in health fields, including but not limited to **nursing, public health, medicine including naturopathy, dentistry, or pharmacy**. We encourage applicants who are still exploring their academic and career interests to apply.
- Applicants should demonstrate a commitment to **addressing the healthcare needs of historically underserved Native or Indigenous communities**.
- Be a rising **sophomore or junior** at PSU as of Fall 2025, with plans to remain enrolled at PSU through spring 2026.
- Maintain enrollment at PSU. Participants are required to be **enrolled for 4+ credits** each term (fall, winter, and spring) while they are in the program.



KEY DATES

- Application Opens:
Feb 3, 2025
- Application Closes:
Feb 28, 2025
- Program Begins:
June 16, 2025



QUESTIONS?

Contact PSU FORWARD
psuforward@pdx.edu or visit
[sites.google.com/pdx.edu/forward-
psu/home](https://sites.google.com/pdx.edu/forward-psu/home)



Portland
State
UNIVERSITY

FORWARD PSU

Fostering Oregon's Workforce in
Advanced and Restorative
Healthcare



Are you interested in addressing healthcare disparities and improving equity for Indigenous communities?

FORWARD PSU is a transformative program designed to prepare a cohort of 30 undergraduate students who are committed to addressing healthcare disparities and improving equity for Indigenous communities.

Through a partnership between Portland State University (PSU) and the Northwest Native American Center for Excellence (NNACoE) at OHSU, FORWARD PSU offers a holistic, 16-month experience.

WHY JOIN?

Be part of a groundbreaking program that helps you build skills, connections, and confidence to succeed in healthcare.

- **Culturally Responsive Curriculum:** Explore how cultural perspectives and lived experiences can shape healthcare practices and create pathways to address the unique needs of historically underserved communities.
- **Tailored Mentorship:** Get guidance from clinical, career, and peer mentors who understand your journey.
- **Clinical Placements:** Gain hands-on experience in Clinical Learning Communities (CLCs) to explore real-world healthcare careers.
- **Financial Support:** Receive stipends, tuition remission, and additional support to ensure your success.

EXPERIENCE ACTIVITIES

- Work **25 hours/week** in healthcare or clinical research placements during the summer immersion (10 weeks).
- Engage in **workshops** (10 weeks) during the summer focused on professional development, cultural identity, and healthcare skills.
- Continue **10 hours/week** in placements during the academic year while attending monthly program meetings.
- Present your clinical/research findings at the Summer Symposium.
- Prepare for graduate/professional school applications with tailored support in Spring 2026.

ELIGIBILITY

- Demonstrate interest and enthusiasm for pursuing advanced degrees in health fields, including but not limited to **nursing, public health, medicine including naturopathy, dentistry, or pharmacy**. We encourage applicants who are still exploring their academic and career interests to apply.
- Applicants should demonstrate a commitment to **addressing the healthcare needs of historically underserved Native or Indigenous communities**.
- Be a rising **sophomore or junior** at PSU as of Fall 2025, with plans to remain enrolled at PSU through spring 2026.
- Maintain enrollment at PSU. Participants are required to be **enrolled for 4+ credits** each term (fall, winter, and spring) while they are in the program.

FINANCIAL SUPPORT

- **Summer Immersion:** Earn hourly wages
- **Academic Year:**
 - Receive **monthly stipends** of \$1,250 for nine months.
 - Quarterly **50% tuition and fee remission**
- **Additional Support:** Apply for summer housing assistance, drop-in childcare, and more.

IMPORTANT DATES

- **Application Opens:** Feb 6, 2025
- **Application Closes:** Feb 28, 2025
- **Summer Immersion Begins:** June 16, 2025
- **Summer Symposium (Capstone Event):** August 22, 2025
- **Program Ends:** June 2026

LEARN MORE AND APPLY

- **Visit:** sites.google.com/pdx.edu/forward-psu/home
- **Contact:** psuforward@pdx.edu
- **Info Sessions:** Join us on 2/7/25 (virtual) or 2/19/25 (in person) to meet program leaders and ask your questions. (Location/zoom details on website).

FORWARD PSU is proudly hosted by Portland State University and supported by the Northwest Native American Center of Excellence (NNACoE) at OHSU. Together, we celebrate Native excellence and advance healthcare equity in Oregon and beyond.



2025

NEBRASKA SUMMER RESEARCH PROGRAM

10 WEEKS. RESEARCH EXPERIENCE. SCHOLARLY COMMUNITY. GRAD SCHOOL READY!

This intensive summer research opportunity provides mentoring and research experiences while allowing scholars to preview graduate school life. Students with a strong interest in graduate programs are encouraged to apply, as are those from populations traditionally underrepresented in graduate education.

PROGRAMS:

- Applied Plant Systems
- Beneficial Insects
- Beneficial Bacteria
- Biomedical Engineering
- Chemistry
- Crop-to-Food Innovation
- Engineering Education Research
- Nanotechnology Coordinated Infrastructure
- Plant Pathology
- Quantum Materials
- Redox Biology
- Sustainability of Civil Infrastructure
- Virology

Average Stipend Range:

\$5,500-\$6,000

Program Duration:

June 2nd, 2025 - August 7th, 2025

Application Opens:

November 15th, 2024

THE BENEFITS:

Stay in suite-style housing, enjoy an on-campus meal plan. Travel fees are included.

Attend workshops on topics such as data visualization, academic writing, and how to create a research poster.

Visit the Omaha Henry Doorly Zoo, rent bikes to explore Lincoln, attend a Lincoln Saltdogs baseball game, enjoy a day at the lake, and more.

APPLY AT

www.unl.edu/summerprogram



The University of Nebraska does not discriminate based upon any protected status. Please see go.unl.edu/nondiscrimination.

GRADUATE STUDIES

101 Seaton Hall,
Lincoln, NE 68588
(402) 472-2875
graduate@unl.edu