



The Update in Brief

February 10, 2025

- UHP Fun Find Winner! | Who found Cadet Field? (Page 1)
- Have You Heard About? | Honors Opportunity Scholarship (Page 2)
- Announcements & Opportunities | Call for Literary Submissions; Job, Internship, and Research Program Opportunities; Opportuni-Tea Video; CAL Travel Grant; ISU Research & Creative Works Symposium; Benny Awards (Pages 3-5)
- UHP Events | Service Event: Make Valentines for Seniors (Page 6)
- ISU Events | McFarland USA; Valentines Dance (Pages 6 & 7)
- Additional Informational Flyers on Jobs, Internships, & Research Programs

UHP FUN FIND WINNER!



Congratulations to Abby Card '25 for solving the UHP Fun Find and sending the first complete and correct solution! When Abby isn't solving puzzles, being a Peer Mentor, researcher, Writing Center Tutor, and working on her Anthropology Degree, she likes to bake at her home bakery. From cookies to croissants, she loves to experiment with new recipes and flavors all the time. Abby works hard every week to fulfill the ever-growing number of orders for Bumble and Berry Bakery. Despite being busy most of the time, she takes joy in knowing that her efforts at school and at home bring happiness and fulfillment to others.

Cadet Field is located between the Rendezvous complex and Reed Gym. This feature of campus is currently available for students to use, whether for big events or general hanging out. In the past, this field was used by ISU's softball team from 1976 to 1983. In 1951, a portion of Cadet Field was turned into Reed Gym so that students have recreational opportunities that are easily accessible on campus.

HAVE YOU HEARD ABOUT?

HONORS OPPORTUNITY SCHOLARSHIP

These scholarships, up to \$250, are intended to help UHP students with expenses related to their education. Unlike a lot of our other scholarships, which are pre-funded and ready to go, the Opportunity Scholarships will be presented to potential donors who can partially or fully fund your request. UHP will be drumming up plenty of interest though--we'll be soliciting donations for the Opportunity Scholarships during both Bengal Giving Day (March 18-19) and the Opportuni-Tea (April 5)!

First step: check out the application criteria in [BOSS](#). Then, consider the following tips:

1. The more specific your request, the better! Potential donors like to know what specific items (and their costs) you're hoping to fund.
2. Your request can be any amount up to \$250. In fact, many donors like to have a variety of cost options to choose from.
3. Your personal statement should be brief (as in ~50 words, and certainly no more than 100). Make sure you're telling potential donors what you need AND how it will help you achieve your educational or professional goals.

And remember: applications close at the end of the day on Friday, February 28!

Opportunity Scholarship Butterfly Making Events

Donors attending the Opportuni-Tea on April 5 will view your Opportunity Scholarship request on handmade butterfly ornaments. We have found that donors at the event are much more likely to give to butterflies that are physically made along with the virtual component of your scholarship.

The butterfly making sessions will include:

- Making a custom butterfly that specifies your request
- Hand writing thank you cards to donors

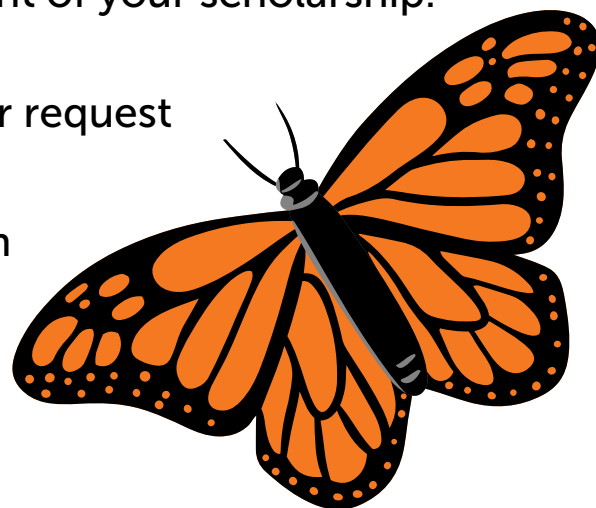
We have two 2-hour sessions for you to drop in anytime to craft your butterfly!

Monday, February 24 | 4-6pm

Monday, March 10 | 4-6pm

In the Honors Lounge (outside REND 305)

[RSVP HERE](#)



Announcements & Opportunities

VOCES Internship of Idaho



A Summer 2025 paid journalism internship for Hispanic/Latino students. In order to apply, students must:

- Be an Idaho high school graduate OR currently attend an Idaho college
- Be a current college student or recent graduate (or equivalent).
- Hispanic or Latino descent.
- A demonstrated interest in journalism, media and civic engagement.
- A demonstrated history of community service and leadership.

The application deadline February 16.

Contact Zac Gerschberg with questions (zacgerschberg@isu.edu)

For more information or to submit your application, go to: vocesinternship.com/be-an-intern

FORWARD PSU INTERNSHIP



FORWARD PSU is a transformative 15-month program designed to support undergraduate students committed to addressing healthcare inequities and improving access for underserved Indigenous communities. This includes Native American, Alaska Native, Native Hawaiian, Pacific Islander, First Nations (Indigenous to Canada), and Indigenous peoples of Mexico, Central, or South America. This program offers:

- Clinical Placements: Hands-on experience with clinical teams at OHSU and other healthcare partners in Oregon.
- Mentorship: Multi-tiered mentorship with clinical, career, and peer mentors.
- Culturally Responsive Curriculum: Workshops that celebrate Native excellence and provide professional development.
- Financial Support: Monthly stipends to support student participation.

Students will gain critical healthcare skills, build professional networks, and prepare for graduate/professional pathways such as medical, dental, or public health programs.

The application deadline is February 28th, 2025.

You can learn more about the program including eligibility requirements, financial support, essay questions, and more on the program's site sites.google.com/pdx.edu/forward-psu/apply.



Summer Research Program

This intensive paid 10-week summer research opportunity provides mentoring and research experiences while allowing scholars to preview graduate school life. Students with a strong interest in graduate programs are encouraged to apply, as are those from populations traditionally underrepresented in graduate education.

Programs include: Applied Plant Systems, Beneficial Insects & Bacteria, Biomedical Engineering, Chemistry, Crop-to-Food Innovation, Plant Pathology, Redox Biology, Quantum Materials, and more.

The program runs from June 2 to August 7, 2025.

Deadline to apply is March 1, for more information and to apply go to summerprogram.unl.edu/

Announcements & Opportunities Continued



ISU Grad Finale

Are you graduating this semester? The ISU Grad Finale, your opportunity to purchase Regalia for the graduation ceremony, will be held this week. Deadline to order/buy is April 3.

More info at isu.edu/graduation/grad-finale/

Tuesday, February 11 | 10am - 3pm

Wednesday, February 12 | 10am - 3pm

ISU Bookstore

Interested in the ROAR Rx / Pre-Pharmacy Program?



If you are interested in any of the Pharmacy programs, you are encouraged to attend the Spring 25 meetings for the ROAR Rx Early Assurance Program from the L.S. Skaggs College of Pharmacy.

- Feb. 13, Thursday | 12:00 - 12:45pm (MT)
- In Person: Clearwater Room, 3rd Floor of the Pond Student Union
- or Zoom link: <https://isu.zoom.us/j/86787013165>

Guest Speaker: Dr. Julie Brown, Connect Pharmaceuticals - a Pharmacy that "is committed to delivering services reliably and accurately to alleviate extra stress for patients and caregivers in long-term care."

Note: Fall 2025 PharmD Interested Students: Time is running out to apply for Fall 2025! Students should complete their application soon ([PharmCAS](#))

Contact Linda Jackson at lindajackson@isu.edu with any questions.

Call For Creative Submissions for the Opportuni-Tea Silent Auction



The annual Honors fundraiser, An Opportuni-Tea, will be held on Saturday, April 5. A silent auction of donated items raises funds that provide scholarships for students in the Honors Program. Donors love to bid on creative works produced by Honors Students.

If you are interested in donating an original piece of creative work or a service, please fill out the [Opportuni-Tea Creative Work Donation Form](#)

Want to Share Your Honors Story?

Call For Video Participation for the Opportuni-Tea

The annual Honors fundraiser, An Opportuni-Tea, will be held on Saturday, April 5. If you are interested in being included in a video about Honors scholarships or being an Honors student for the event, please fill out this form.

[Opportuni-Tea Video Form](#)



2024/2025 Undergraduate Student Travel Grant

The College of Arts and Letters (CAL) seeks proposals for travel funds from full-time undergraduate students in the college. Proposals will be accepted until funds are expended. Proposals must be submitted prior to the dates of travel. Funds for travel MUST be expended by May 2, 2025, and all paperwork completed by June 2, 2025.

Details about submitting a proposal can be found in the linked document below. Contact Carrie Page (carriepage@isu.edu) with questions.

[CAL 2024/2025 Undergraduate Student Travel Grant](#)

Announcements & Opportunities Continued

The Palouse Review is Accepting Literary Submissions

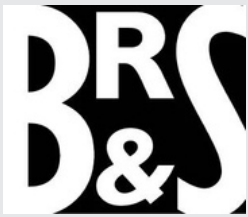


The Palouse Review is the biannual arts and academics journal of the Washington State University Honors College. We accept submissions from current and former honors students from throughout the Western Regional Honors Council. Our editors are looking for carefully crafted, evocative work that demonstrates the literary, artistic, and academic excellence of our broader honors community.

The submission deadline for the Spring 2025 edition is March 23.

For more information or to submit your work, go to: palousereview.wsu.edu

Call For Submissions: ISU's Black Rock & Sage Magazine



ISU's student journal of creative works, Black Rock and Sage, is now open for creative submissions. BR&S will consider previously unpublished fiction, poetry, plays, essays, memoirs, art, maps, scores, schematics, musical performances, and more. We are interested in creative genres familiar and unexpected alike.

Deadline for submissions is February 14, 2025.

Visit blackrockandsage.org for more information and to submit your work.

Call For Abstracts: ISU 2025 Research & Creative Works Symposium

The ISU Research and Creative Works Symposium on Wednesday, March 19, 2025 and is an opportunity for undergraduate and graduate students of all disciplines and degree levels to present their in-progress or completed scholarly or creative works for a chance to win big bucks!

To help answer any questions and show examples from previous years, we will be hosting 45 Minute Insider Sessions on Jan 28 and Feb 21

Abstract submissions open January 21 and close February 26.

Visit www.isu.edu/researchsymposium/ for more information and to submit an abstract.

NOMINATIONS ARE OPEN FOR... THE BENNY AWARDS



UNDERGRADUATE STUDENT LEADER OF THE YEAR

GRADUATE STUDENT LEADER OF THE YEAR

ROAR BENGAL ROAR (SPIRIT AWARD)

FACULTY MEMBER OF THE YEAR

STAFF MEMBER OF THE YEAR

EXEMPLARY SERVICE AWARD

ALUMNUS OF THE YEAR

OUTSTANDING EVENT OF THE YEAR

INSPIRATIONAL BENGAL OF THE YEAR

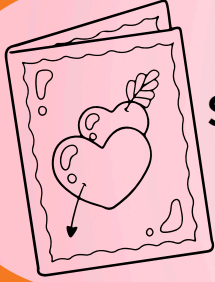
STUDENT ORGANIZATION OF THE YEAR

STUDENT AFFAIRS AWARD OF DISTINCTION

STUDENT ORGANIZATION ADVISOR OF THE YEAR

DEADLINE FOR NOMINATIONS IS FEBRUARY 28, 2025 WWW.ISU.EDU/BENNYAWARDS/

February UHP EVENTS



VALENTINES FOR SENIORS

Spread some love by making cards for Seniors.

Wednesday, February 12 @ 4 pm
SUB | South Fork Room



Volunteer at the Idaho Food Bank



Use the sign up form to indicate interest & availability

[Idaho Food Bank Volunteer Form](#)

UPCOMING.... Research Mixer Details TBA



Plan for future UHP Events at
isu.edu/honors/current-students/honors-student-events/

Special Screening of "McFarland, USA" & Motivational Talk by Thomas Valles

This FREE event is proudly hosted by CAMP, HEP, and TRIO and offers an excellent opportunity to be inspired by a journey of resilience and triumph.

Thomas Valles is one of the real-life runners featured in Disney's McFarland, USA. Hear his powerful story of overcoming challenges, finding positive role models, and achieving success through determination.

Tuesday, February 11 | 5:30 - 10 pm
ISU Bengal Theatre



SAVE THE DATE

\$25 BAHM!

Pick the day & time that fits
your schedule.

Weds, March 19 @ 5pm

Thurs, March 20 @ 8am

Fri, March 21 @ Noon

**Details and RSVP form will
be available soon.**

VALENTINE'S DANCE

**Wednesday, February 12
7 - 10 PM
Pond Student Union Ballroom**



Idaho State
University

University
Honors Program

www.isu.edu/honors

Dr. Sarah Robey | Honors Director | sarahrobey@isu.edu

Conner Suddick | Instructor/Coordinator | connersuddick@isu.edu

Dr. Kathryn Holt | Instructor/Coordinator | kathrynholt@isu.edu

Lori Tapanila | Academic Support | loritapanila@isu.edu



[@idahostatehonors](https://www.instagram.com/idahostatehonors)



[@Idaho State University Honors](https://www.facebook.com/IdahoStateUniversityHonors)



[@Idaho_Honor](https://twitter.com/Idaho_Honor)



WHAT IS GRIT MARKETING?

Grit Marketing is a direct to home sales organization deadset on empowering young individuals to get ahead. No degree or experience necessary. Hard work required.

ADDITIONAL VALUE

- +World class sales training with the best in the industry
- +Internship credit & resume experience
- +Growth & Management opportunities
- +Network with top 1% U.S. earners
- +international travel & trip incentives
- +Quality gear and prizes
- +Home buying mentorship
- +Private Investment opportunities
(real estate, private equity, investment education)

CHECK EVERY BOX

- Bulk your resume
- Learn the timeless skill of sales and communication
- Professional earnings

Gain experience, earnings, and internship credit.
At Grit Marketing, you don't have to pick just one.

AVERAGE EARNINGS [12 WEEKS]

- 0 Years: \$23,148
- 1 Year: \$50,423
- 2 Years: \$120,814
- 3+ Years: \$246,844

(Based on 12 Week min. Selling Block)

Commission and Hourly positions available



**LIMITED POSITIONS.
APPLY NOW.**

NOW HIRING

Summer pest control technician

April 1 - Aug 31
\$18/hr, + OT

Perks

- Company Vehicle
- Gas card

Requirements

- 18 years old
- Drivers License w/ clean record
- Background check
- Drug Test



2025

NEBRASKA SUMMER RESEARCH PROGRAM

10 WEEKS. RESEARCH EXPERIENCE. SCHOLARLY COMMUNITY. GRAD SCHOOL READY!

This intensive summer research opportunity provides mentoring and research experiences while allowing scholars to preview graduate school life. Students with a strong interest in graduate programs are encouraged to apply, as are those from populations traditionally underrepresented in graduate education.

PROGRAMS:

- Applied Plant Systems
- Beneficial Insects
- Beneficial Bacteria
- Biomedical Engineering
- Chemistry
- Crop-to-Food Innovation
- Engineering Education Research
- Nanotechnology Coordinated Infrastructure
- Plant Pathology
- Quantum Materials
- Redox Biology
- Sustainability of Civil Infrastructure
- Virology

Average Stipend Range:

\$5,500-\$6,000

Program Duration:

June 2nd, 2025 - August 7th, 2025

Application Opens:

November 15th, 2024

THE BENEFITS:

Stay in suite-style housing, enjoy an on-campus meal plan. Travel fees are included.

Attend workshops on topics such as data visualization, academic writing, and how to create a research poster.

Visit the Omaha Henry Doorly Zoo, rent bikes to explore Lincoln, attend a Lincoln Saltdogs baseball game, enjoy a day at the lake, and more.

APPLY AT

www.unl.edu/summerprogram



The University of Nebraska does not discriminate based upon any protected status. Please see go.unl.edu/nondiscrimination.

GRADUATE STUDIES

101 Seaton Hall,
Lincoln, NE 68588
(402) 472-2875
graduate@unl.edu

FORWARD PSU

Fostering Oregon's Workforce in
Advanced and Restorative
Healthcare

Are you interested in addressing healthcare
disparities and improving equity for Indigenous
communities?

WHY JOIN?

- Hands-on **Clinical Placements** with healthcare teams.
- Multi-tiered mentorship to guide your journey.
- Culturally responsive workshops celebrating Native excellence.
- Financial support to ensure your success.

ELIGIBILITY REQUIREMENTS

- Demonstrate interest and enthusiasm for pursuing advanced degrees in health fields, including but not limited to **nursing, public health, medicine including naturopathy, dentistry, or pharmacy**. We encourage applicants who are still exploring their academic and career interests to apply.
- Applicants should demonstrate a commitment to **addressing the healthcare needs of historically underserved Native or Indigenous communities**.
- Be a rising **sophomore or junior** at PSU as of Fall 2025, with plans to remain enrolled at PSU through spring 2026.
- Maintain enrollment at PSU. Participants are required to be **enrolled for 4+ credits** each term (fall, winter, and spring) while they are in the program.



KEY DATES

- Application Opens:
Feb 3, 2025
- Application Closes:
Feb 28, 2025
- Program Begins:
June 16, 2025



QUESTIONS?

Contact PSU FORWARD
psuforward@pdx.edu or visit
[sites.google.com/pdx.edu/forward-
psu/home](https://sites.google.com/pdx.edu/forward-psu/home)



Portland
State
UNIVERSITY

FORWARD PSU

Fostering Oregon's Workforce in
Advanced and Restorative
Healthcare



Are you interested in addressing healthcare disparities and improving equity for Indigenous communities?

FORWARD PSU is a transformative program designed to prepare a cohort of 30 undergraduate students who are committed to addressing healthcare disparities and improving equity for Indigenous communities.

Through a partnership between Portland State University (PSU) and the Northwest Native American Center for Excellence (NNACoE) at OHSU, FORWARD PSU offers a holistic, 16-month experience.

WHY JOIN?

Be part of a groundbreaking program that helps you build skills, connections, and confidence to succeed in healthcare.

- **Culturally Responsive Curriculum:** Explore how cultural perspectives and lived experiences can shape healthcare practices and create pathways to address the unique needs of historically underserved communities.
- **Tailored Mentorship:** Get guidance from clinical, career, and peer mentors who understand your journey.
- **Clinical Placements:** Gain hands-on experience in Clinical Learning Communities (CLCs) to explore real-world healthcare careers.
- **Financial Support:** Receive stipends, tuition remission, and additional support to ensure your success.

EXPERIENCE ACTIVITIES

- Work **25 hours/week** in healthcare or clinical research placements during the summer immersion (10 weeks).
- Engage in **workshops** (10 weeks) during the summer focused on professional development, cultural identity, and healthcare skills.
- Continue **10 hours/week** in placements during the academic year while attending monthly program meetings.
- Present your clinical/research findings at the Summer Symposium.
- Prepare for graduate/professional school applications with tailored support in Spring 2026.

ELIGIBILITY

- Demonstrate interest and enthusiasm for pursuing advanced degrees in health fields, including but not limited to **nursing, public health, medicine including naturopathy, dentistry, or pharmacy**. We encourage applicants who are still exploring their academic and career interests to apply.
- Applicants should demonstrate a commitment to **addressing the healthcare needs of historically underserved Native or Indigenous communities**.
- Be a rising **sophomore or junior** at PSU as of Fall 2025, with plans to remain enrolled at PSU through spring 2026.
- Maintain enrollment at PSU. Participants are required to be **enrolled for 4+ credits** each term (fall, winter, and spring) while they are in the program.

FINANCIAL SUPPORT

- **Summer Immersion:** Earn hourly wages
- **Academic Year:**
 - Receive **monthly stipends** of \$1,250 for nine months.
 - Quarterly **50% tuition and fee remission**
- **Additional Support:** Apply for summer housing assistance, drop-in childcare, and more.

IMPORTANT DATES

- **Application Opens:** Feb 6, 2025
- **Application Closes:** Feb 28, 2025
- **Summer Immersion Begins:** June 16, 2025
- **Summer Symposium (Capstone Event):** August 22, 2025
- **Program Ends:** June 2026

LEARN MORE AND APPLY

- **Visit:** sites.google.com/pdx.edu/forward-psu/home
- **Contact:** psuforward@pdx.edu
- **Info Sessions:** Join us on 2/7/25 (virtual) or 2/19/25 (in person) to meet program leaders and ask your questions. (Location/zoom details on website).

FORWARD PSU is proudly hosted by Portland State University and supported by the Northwest Native American Center of Excellence (NNACoE) at OHSU. Together, we celebrate Native excellence and advance healthcare equity in Oregon and beyond.

