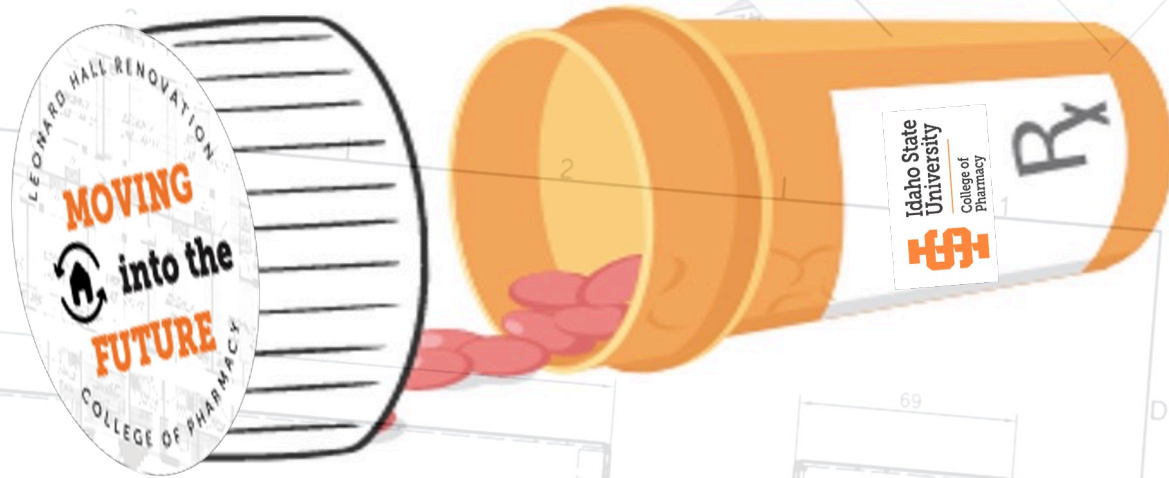


LEONARD HALL RELOCATION PLAN

Spring 2023



**THIS IS THE SAME EDUCATION
YOU HAVE BEEN GETTING.
COLOR SIZE OR SHAPE MAY
APPEAR DIFFERENT**

B-E

150

Relocation Planning Team

Ranee
Parker

Nancy
Herrick

Gary Austill

Marvin
Schulte

Gail
Burgett

Jeff
Parkinson

Cara Liday

Jen Adams

Walter
Fitzgerald

Tom
Wadsworth

Rex Force

Cole
Elquist

Facilities

Vision & Mission

VISION

To provide state of the art and inviting facilities that inspire learning, discovery, and Bengal pride to all who enter.

MISSION

Maintain learning, research, and clinical facilities that support the development of caring and collaborative pharmacists, psychopharmacologists, and scholars

VALUES

- Safety
- Organization
- Cleanliness
- Equitable
- Professionalism
- Pride
- Unity



Classroom Goals



Maintain high quality DL experience



Maintain Recording capabilities



Adjacent to student commons/study areas



Limited travel

Student Experience



Reasonable access to private study areas



Ensure on-site and virtual access to faculty & staff



Ensure access to Dean's Office Resources



Cleaning supplies in rooms



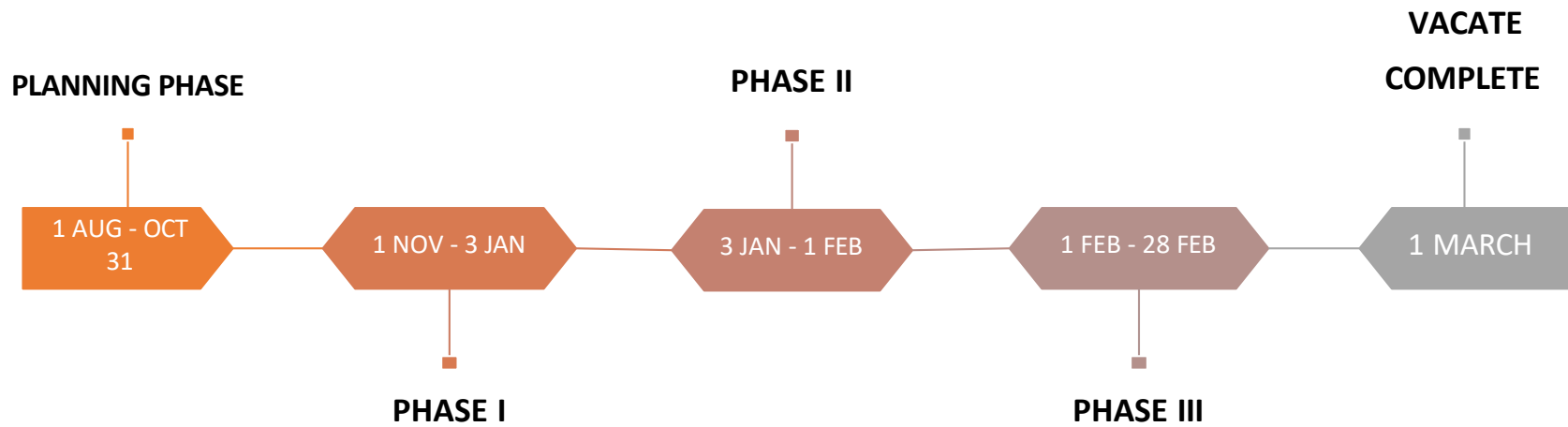
Private amenities where possible



Ensure students have access to research opportunities



Relocation Timeline






Staff

Work Areas

- Office & work areas moved in stages
- All office & work areas vacated by Feb 28th
- Direct supervisors to coordinate moving needs with Dean's office
- Meetings via zoom or BTC conference room

Available to Students & Faculty

- Availability to ALL students via zoom office hours
 - In-person availability for Pocatello
- 




Faculty

Work Areas

- Office & lab moved in stages
- All Offices & Labs vacated by Feb 28th
- Dept Chairs to coordinate moving needs with Dean's office
- PPRA Faculty work from clinic office, home, or hoteling space
- BPSCI Faculty work from EAMES labs, home, or hoteling space
- Department/Faculty meetings via zoom or BTC conference room

Available to Students

- In-person Lectures/Labs/Recitations
 - Availability to ALL students via zoom office hours
- 



Students


Classrooms

- All classrooms relocated by Jan 3
- In-person attendance for all Lectures/Labs/Recitations
- Case Studies group work via zoom and EDU 220

Student Study Areas

- Located adjacent to class areas across campus
- Reservable private study areas in library

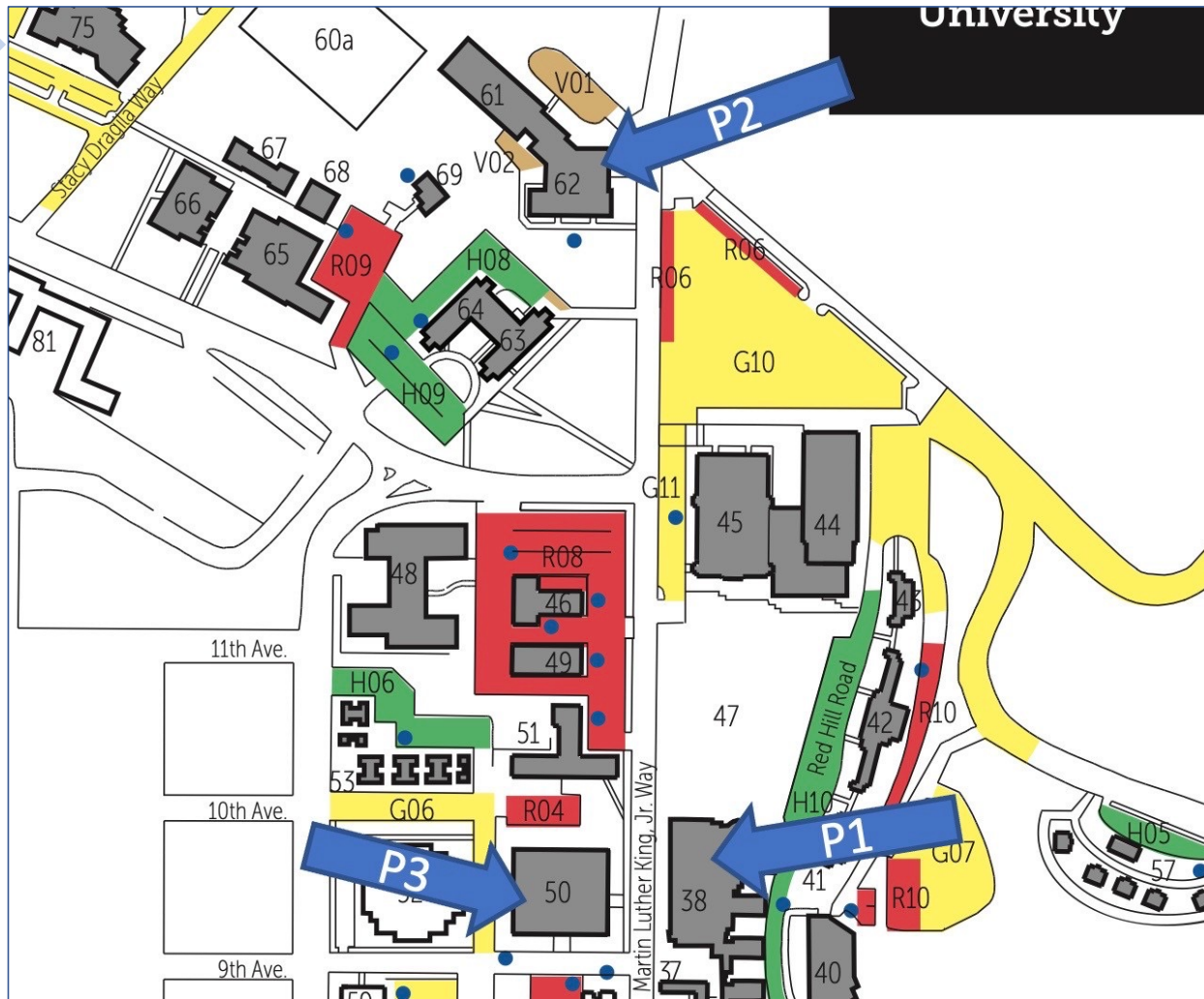
Student Common Areas

- Common areas located adjacent to each relocated class
 - Leonard Hall vacated by Feb 28th
- 

Phase I

1 Nov TO 3 Jan

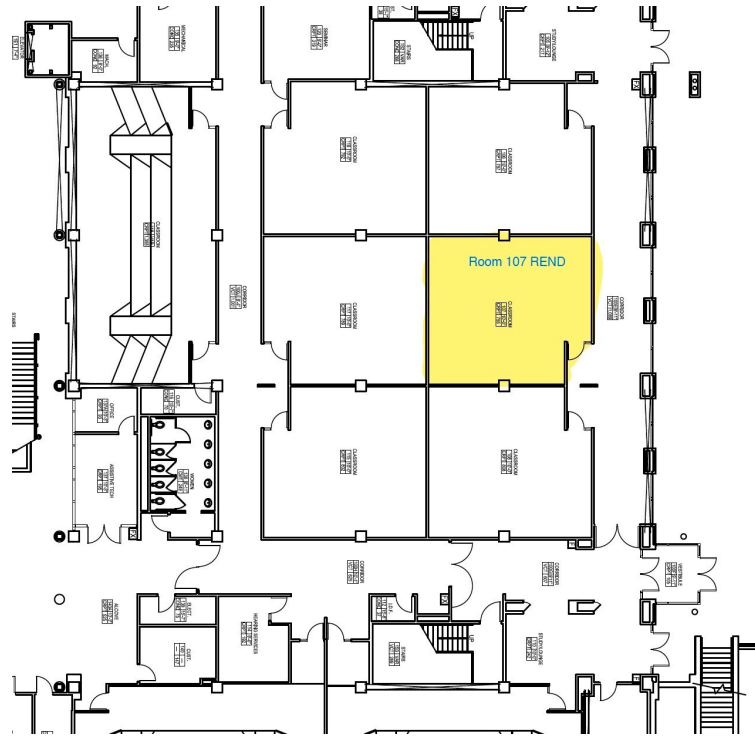
Classroom	Offices	Labs
<ul style="list-style-type: none">• P1 – REN 107• P2 - EDU 224• P3 – LIB B16• Case Studies – EDU 220	<ul style="list-style-type: none">• Instructional Manager• Dean• EAD• Manager• Director of Events & Engagement• IT Manager• BPSCI Admin	<ul style="list-style-type: none">• Construction of EAMES Complex• Inventory of all equipment



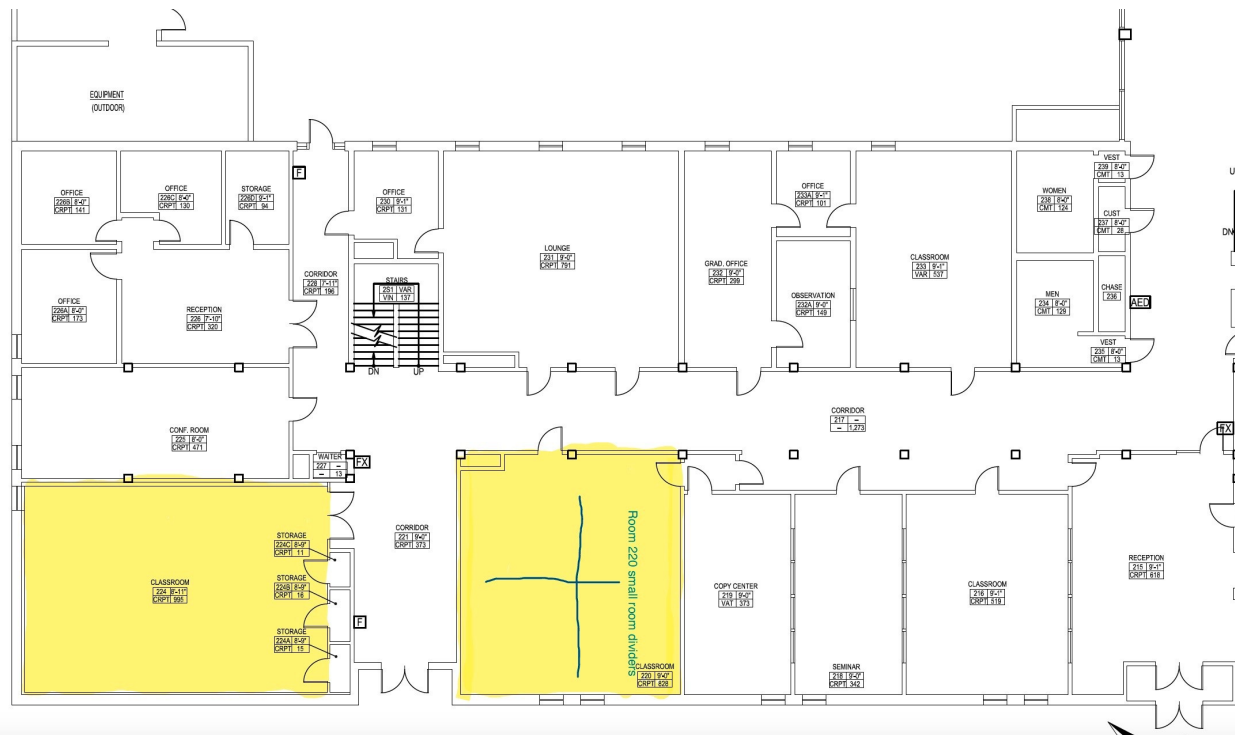
738	E Carter
750	E Carter
765	S 8th
800	S 5th
755	E Carter
700	E Humbolt St
833	S 8th
870	S 5th
599	S 8th
1010	S 5th
1036	S 5th Ave
1080	S 5th
1080	S 5th
1001	Oscar
150	S 7th
779	E Humbolt St
749	E Humbolt
150	S 7th
715	E Humbolt
748	E Dunn
738	E Dunn
718	E Dunn St
1336	S 5th
650	E Dunn St
638	E Dunn
625	E Humbolt St
680	E Humbolt
541	S
341	S
960	Oscar
915	Main Luther King Jr Way
1400	S 7th
Phide	
720	S 8th
999	Main Luther King Jr Way
Phide	
1111	Main Luther King Jr Way
1321	Rad Hill
1391	Rad Hill
1151	Rad Hill Rd
1245	Rad Hill
1291	E Terry
1291	E Terry
1230	Main Luther King Jr
1195	Main Luther King Jr
777	Memorial Dr
1198	Main Luther King Jr
850	S 9th
1182	Main Luther King Jr Way
Phide	
728	S 10th
1001	Sam Nixon Dr
183	Batz
1850	Batz
1850	Batz
1477	Batz
1251	

58	Buzzo Park	East of Oshe
59	SIJ Federal Credit Union	Phide
60	Ershy	
61	Hill "Acad"	550 Memorial
62	Alton Hall	1520 E Terry
63	College of Education	1520 E Terry
64	Garrison Hall	802 Memorial
65	Turner House	750 Memorial
66	Carl Life Science	640 Memorial
67	Bosley Nursing	600 Memorial
68	Locke Center	600 Memorial
69	Speech Pathology/Audiology	600 Memorial
70	First Science	600 Memorial
71	5th Street Apartments	603 S 5th
72	Dwelling Building	71 510 S Main
73	West Campus Apartments	746 S 5th

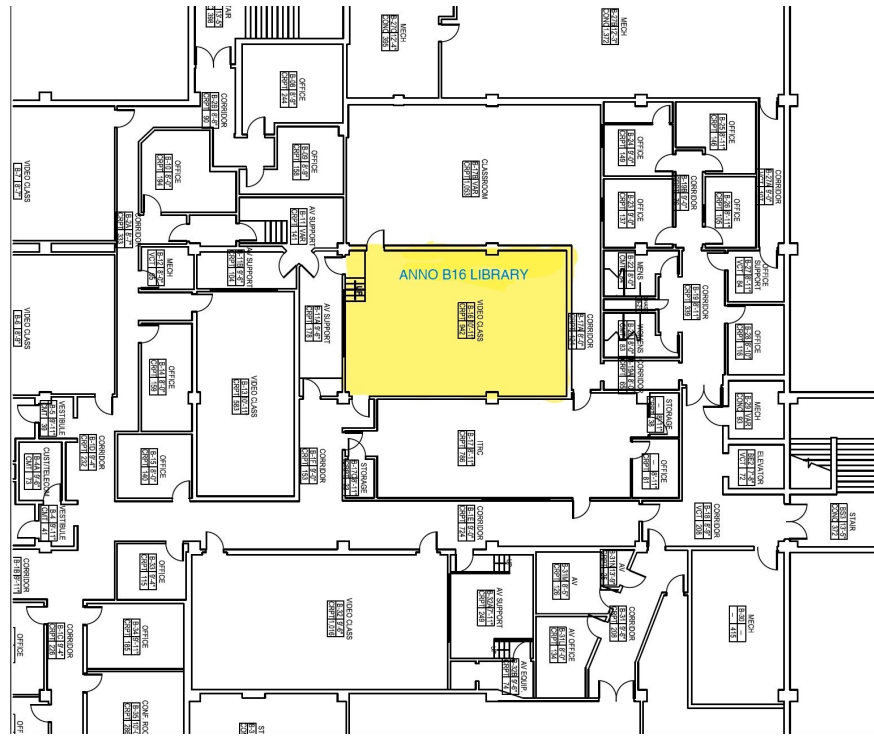
P1 Classroom – REN 107



P2 Classroom – EDU 224 & 220



P3 Classroom – LIB B16



Offices - BTC Part 1



Phase II - Revised (12/19)

3 Jan TO 1 Feb

Classroom	Offices	Labs
<ul style="list-style-type: none">• In use	<ul style="list-style-type: none">• PPRA<ul style="list-style-type: none">- Faculty- Hoteling Space• BPSCI<ul style="list-style-type: none">—Schulte/Awale—Core/Barrott—Habashi/Pashikanti• Development Office• Marketing & Comm	<p><u>Week 1</u></p> <ul style="list-style-type: none">• Schulte Labs and office• Awale Lab and office• Austin & Lai Lab• Unused Labs <p><u>Week 2 &3</u></p> <ul style="list-style-type: none">• Core Laboratory• Centrifuges, autoclaves and other heavy equipment.• Barrott Lab and office• Move all items to be stored• Move heavy equipment• Compounding lab ? <p><u>Week 3</u></p> <ul style="list-style-type: none">• Habashi Laboratory and office• Pashikanti Laboratory and office <p><u>Week 4</u></p> <ul style="list-style-type: none">• Schulte Labs• Awale lab and office

Labs Eames Complex



LEGEND - ESTIMA

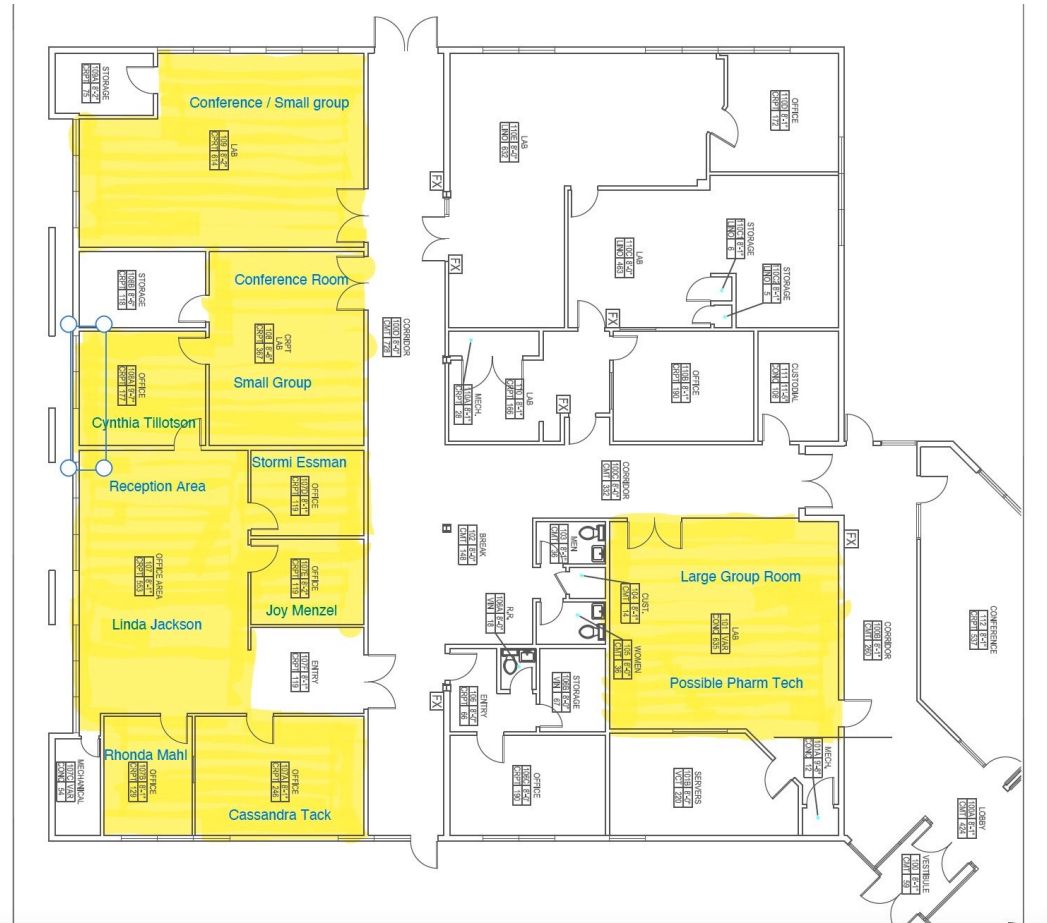
QTY	ICON	ITEM
30		A-PAN
6		W-UMB
6		W-UMB
5		W-UMB
		W-UMB
		W-UMB
		W-UMB
		SHARED
		EXTRN
		RECELV

Phase III

1 Feb TO 28 Feb

Classroom	Offices	Labs
<ul style="list-style-type: none">In use	<ul style="list-style-type: none">PPRA<ul style="list-style-type: none">Admin OfficeALL remaining PPRA OfficesBPSCI<ul style="list-style-type: none">Austin BarrottUnused labAwale HabishiPashikantiStudent SuccessOEE	<p><u>Week 5</u> Core Lab Centrifuges, autoclaves, heavy equipment</p> <p><u>Week 6</u> Barrot Lab Habashi Lab</p> <p><u>Week 7</u> Pashikanti</p>

Offices – BTC Part 2





Transportation & Parking

- Busing transportation between Eames Complex and main campus during school operation hours
- General parking is available near each location
- Resources may be available for students with unusual transportation hardship
- Students/Faculty/Staff should begin planning for necessary travel adjustments (carpooling, parking passes)

Keeping Together



More frequent social gathering's



Faculty and staff making regular visits to classrooms



Reasonable amenities for classrooms R&R

LH Relocation

[BTC Schematics](#)

Room#	Brief Description	Current Assignment	Notes	Capacity
BTC 120E	office	Amanda Hart	Available now	1
BTC 120J	office	Jeff Parkinson	Available now	1
BTC 120K	office	Nancy Herrick	Available now	1
BTC 120L	office	Tom Wadsworth	Available now	1
BTC 120M	office	Walter Fitzgerald	Available now	1
BTC 120	Reception Area	Thalia/work study	Available now	1
BTC 115	Cubicles	Waldron assistant(s)	Available Spring	3
BTC 115C	Cubicles	Hoteling Space - PPRA Faculty	Available Dec-Jan	2
BTC 115F	office	Phil Yankovich	Available now	1
BTC 115E	office	Brooke Buffa!	Available now	1
BTC 115D	office	Lee Ann Waldron	Available now	1
BTC 113	Cubicles	Hoteling Space - BPSCI Faculty/Grads	Available now	2
BTC 113A	office	Marvin Schulte	Available now	1
BTC 113B	prep area/kitchenette	Marvin Schulte/Gail Burget	Available now	NA
BTC 114	office	Gail Burget	Available now	1
BTC 107	Reception Area	Linda Jackson	Available Jan-Feb	1
BTC 107A	office	Cynthia Tillotson	Available Jan-Feb	1
BTC 107B	office	Rhonda Mahl	Available Jan-Feb	1
BTC 107E	office	Joy Menzel	Available Jan-Feb	1
BTC 107D	office	Stormi Essman	Available Jan-Feb	1
BTC 108A	office	Cassandra Tack	Available Jan-Feb	1
BTC 108	Conference/Small group room		Available in Spring	6-8
BTC 109	Conference/Small group room		Available now	8-10
BTC 101	Large Group	Pharm Tech Program?	Available now	15
BTC 116 Suite	Offices	PPRAIBPSCI faculty	Potentially March	6
BTC 117	Conference Room	Shared - Reservable	Available now	10
				--