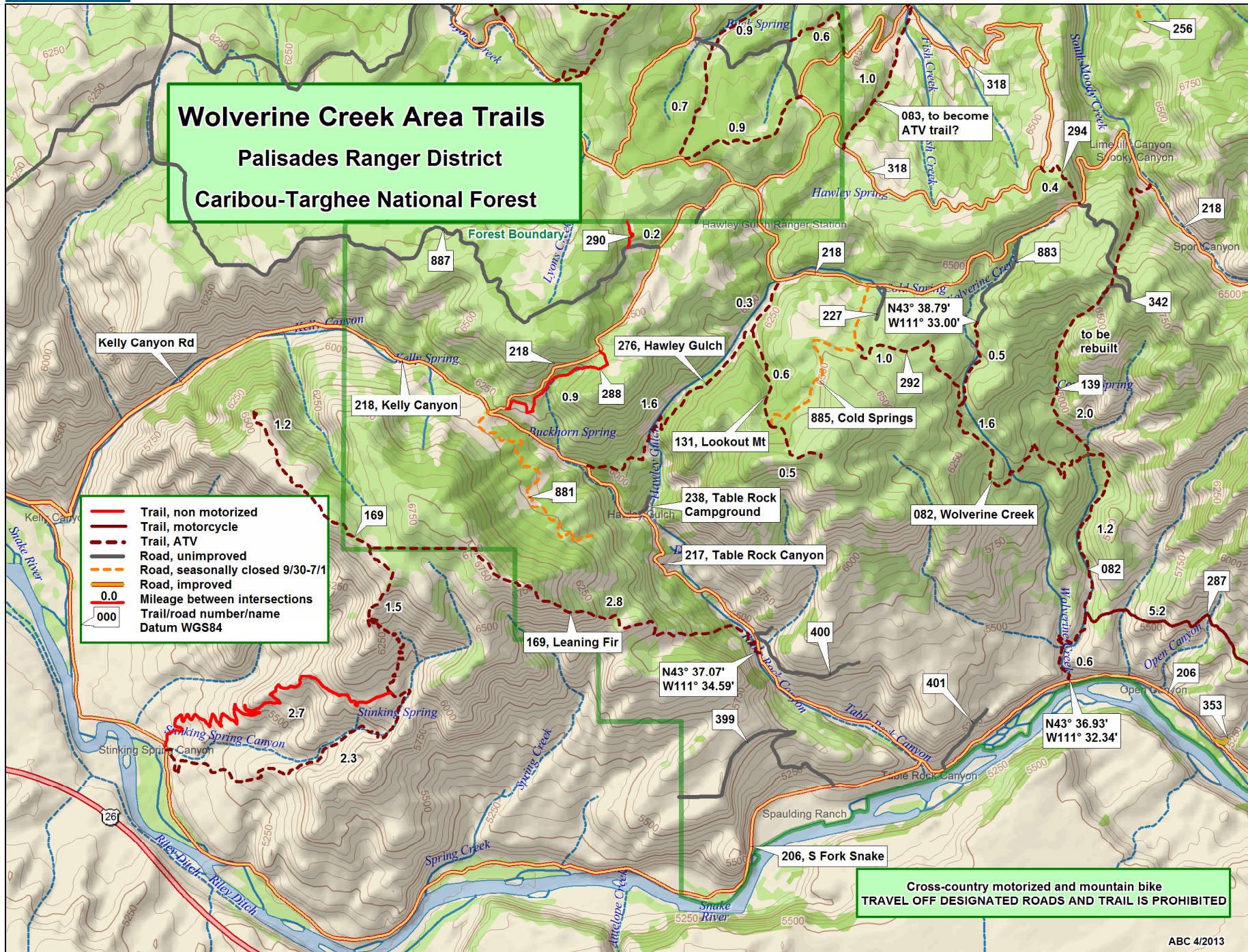


Wolverine Creek Area Trails
Palisades Ranger District
Caribou-Targhee National Forest

- Trail, non motorized
- Trail, motorcycle
- - - Trail, ATV
- Road, unimproved
- Road, seasonally closed 9/30-7/1
- Road, improved
- 0.0 Mileage between intersections
- 000 Trail/road number/name
- Datum WGS84

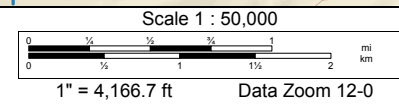
Cross-country motorized and mountain bike
TRAVEL OFF DESIGNATED ROADS AND TRAIL IS PROHIBITED



Data use subject to license.

© DeLorme. XMap® 6.

www.delorme.com



ABC 4/2013