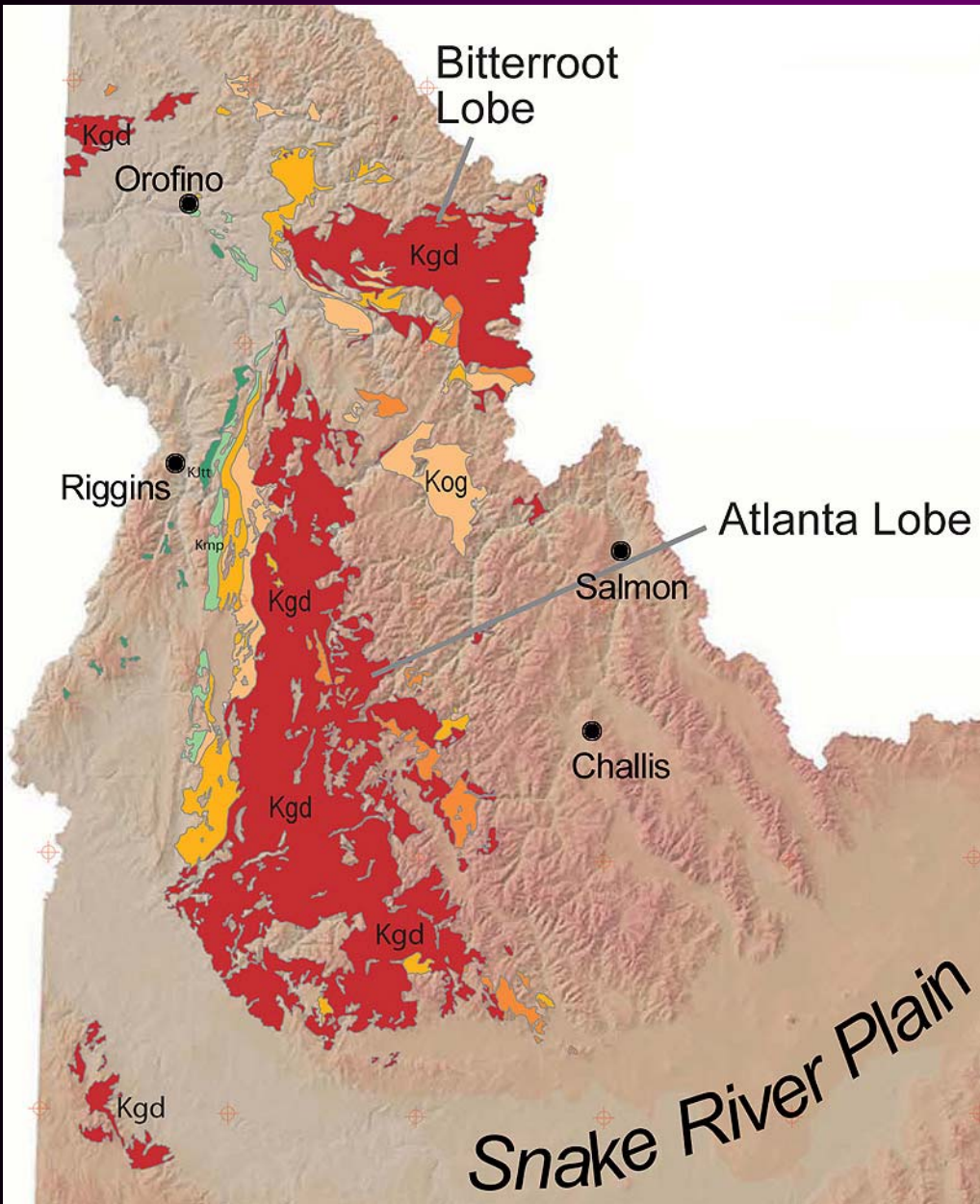


# Atlanta Lobe Idaho Batholith

Photos by Jim Cash  
Moscow High School

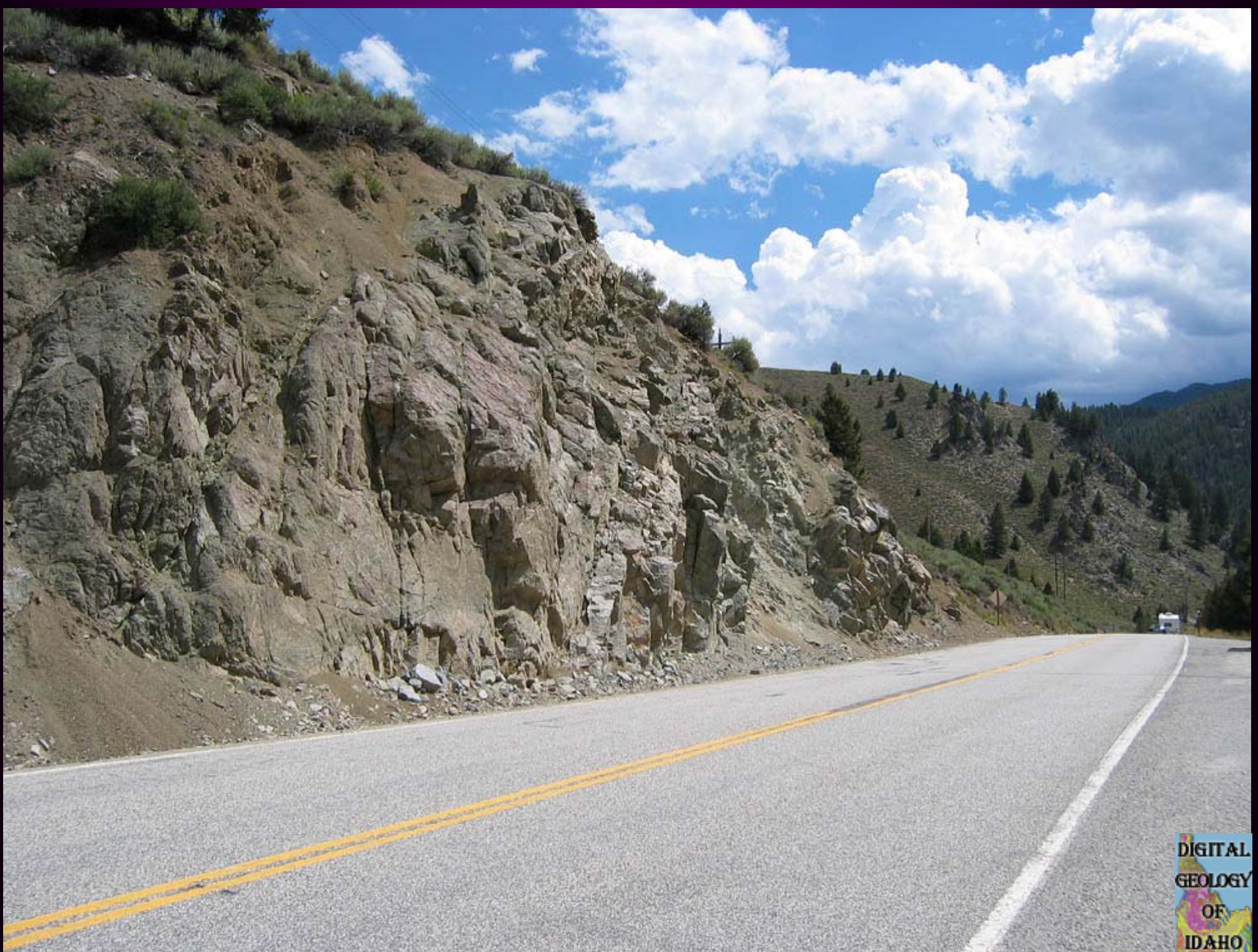




**View of Lake Cascade from West Mountain – Long Valley is a fault-bounded graben.**



Outcrop of granodiorite West Mountain, west of Cascade, Valley Co.

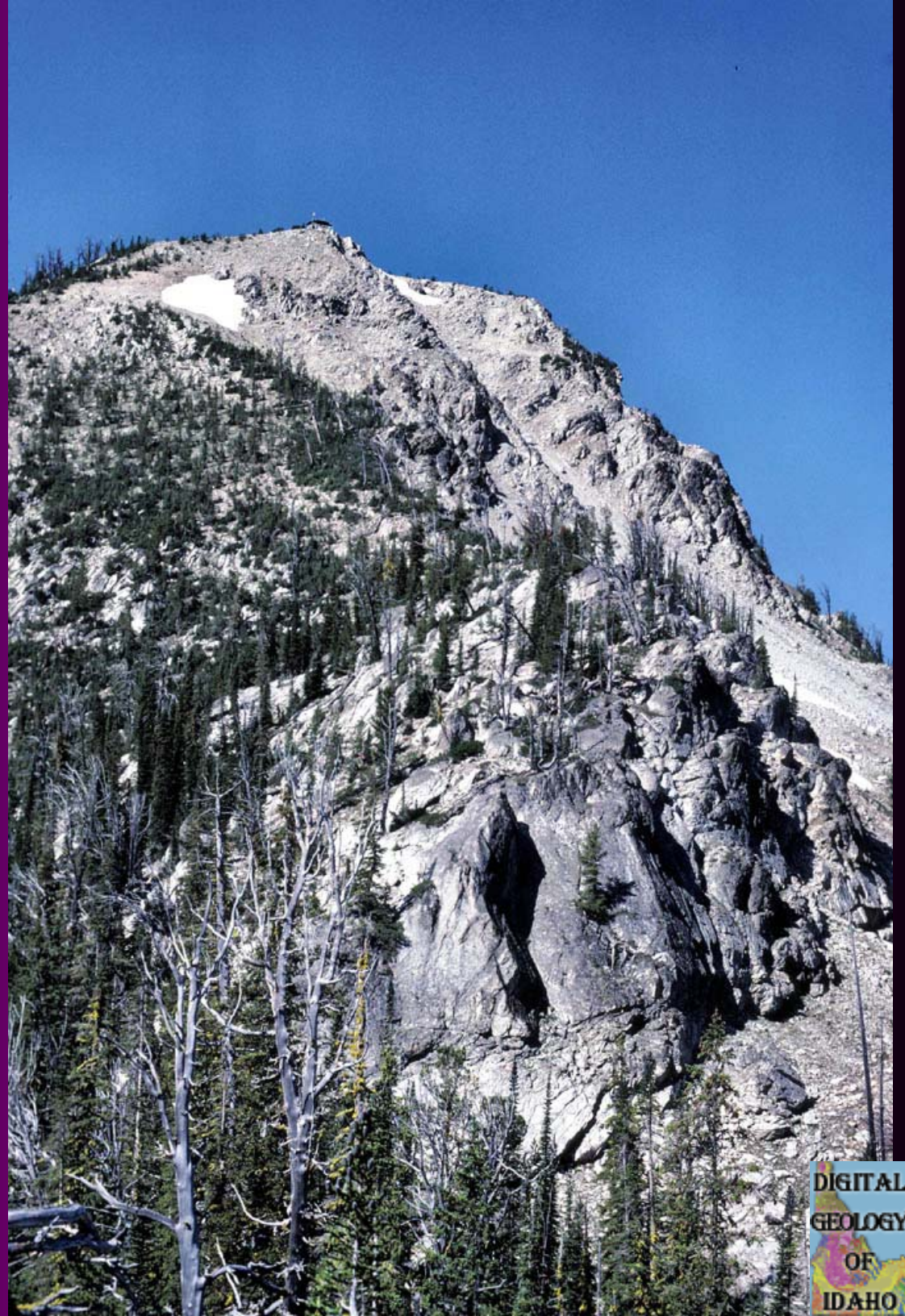


Outcrop of porphyritic biotite granodiorite and granite, Idaho 75, mp 189

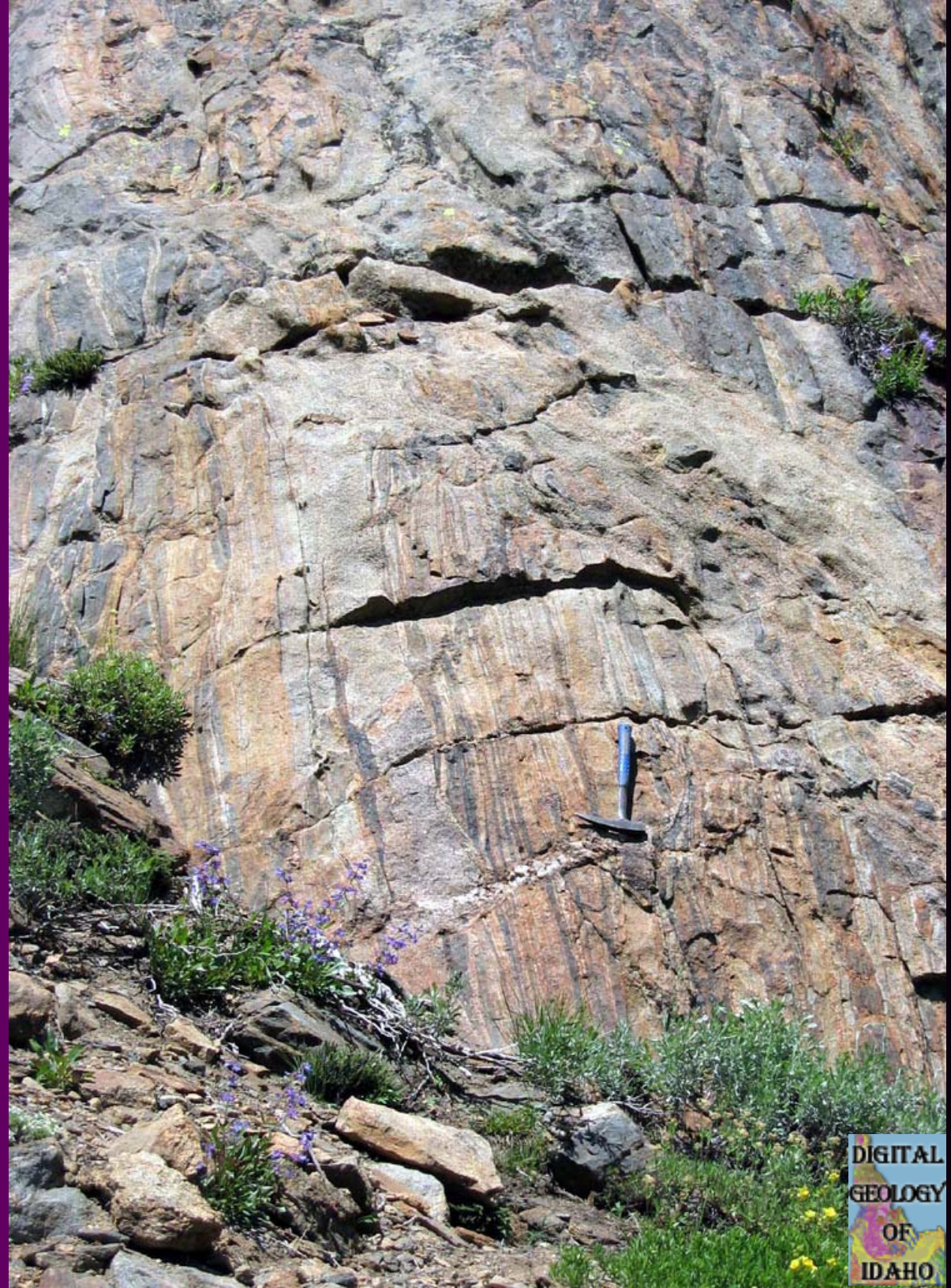


View of exfoliation in granitic rock along S. Fk. Clearwater River

View of Roughneck  
Peak and  
hornblende-biotite  
granodiorite  
outcrops.



Outcrop of migmatitic rock  
with near vertical banding,  
Valley County.





**View of massive talus on north side of Foolhen Meadow, Forest Road 48, Valley Co.**





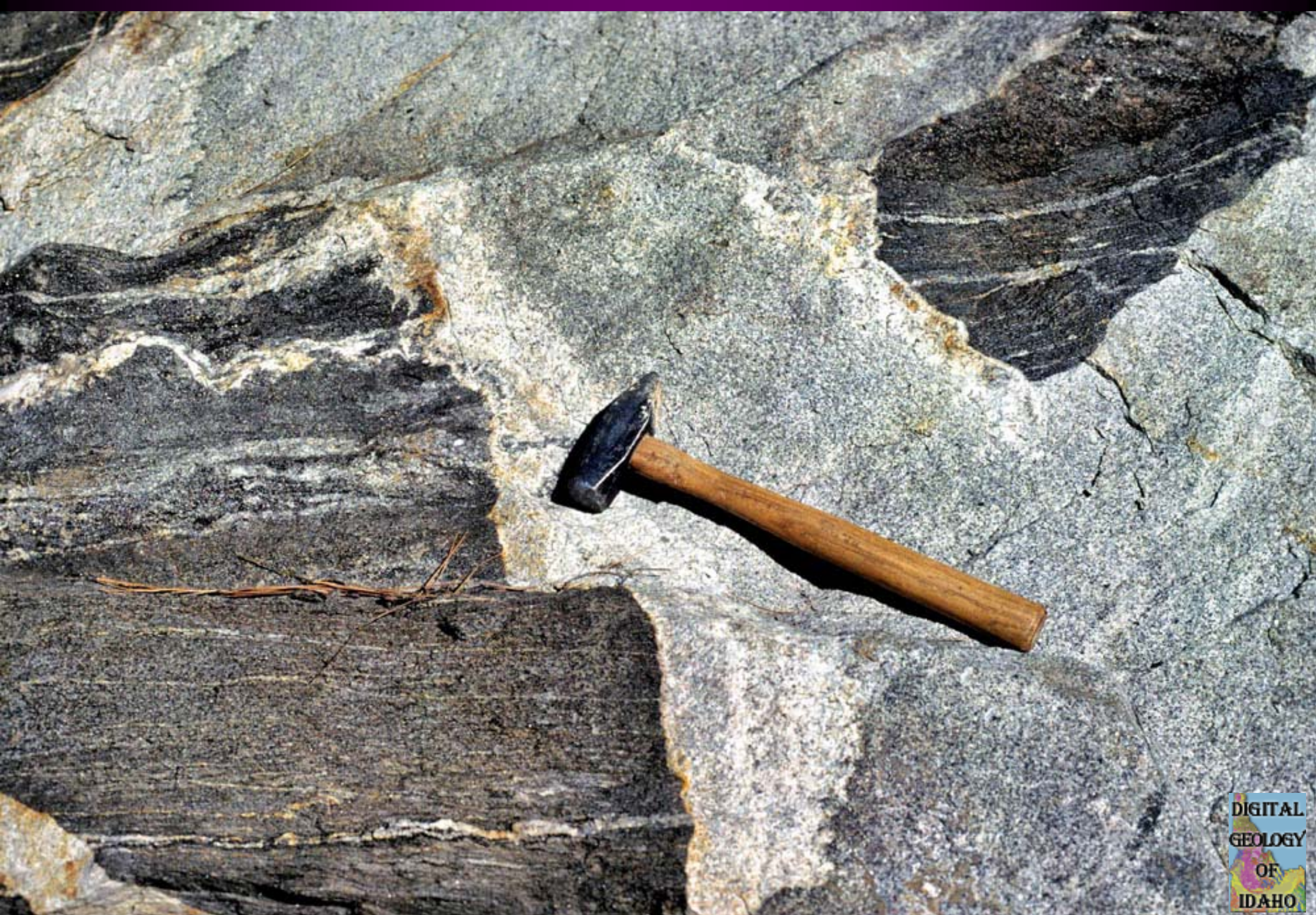
**Weathering of jointed granite has revealed a face-like sculpture, Forest Road 48, Valley Co.**



Glacially polished granitic rock in Sater Meadow, Forest Road 446, Valley Co.



**Outcrop of decomposing granite containing many felsic dikes, Highway 95, Adams County.**



Outcrop of megacrystic granodiorite. Walkers Peak.



Outcrop of granodiorite crosscut by mafic dike.



Hornblend-biotite granodiorite, Skeleton Creek, cut by felsic dikes, Photo by Reed Lewis



Close-up of foliated hornblende tonalite, Forest Road 446, Valley Co

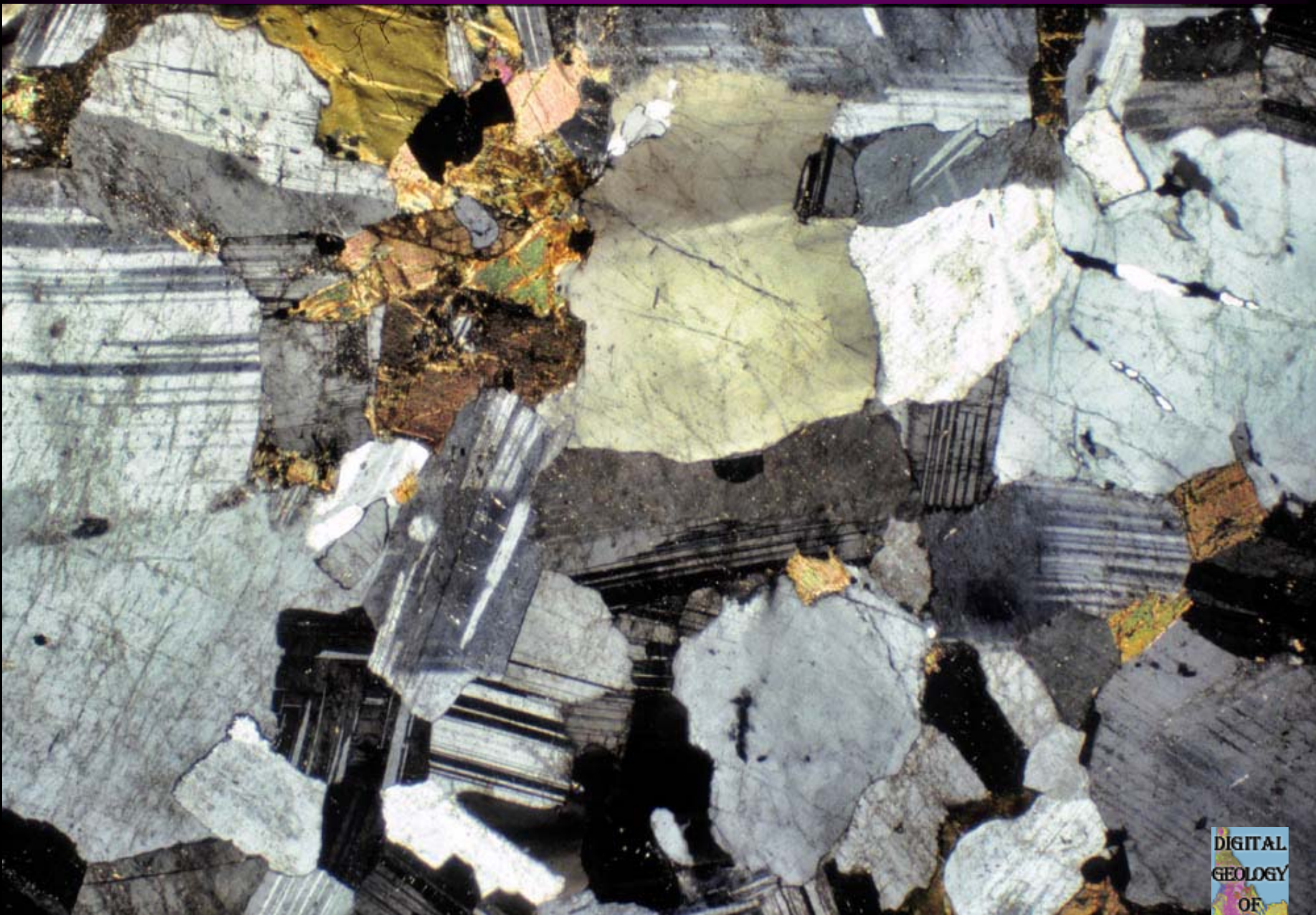


Thin section of typical biotite granodiorite showing strained quartz grains. Southeast of Big Smoky Creek. Plagioclase feldspar is twinned.

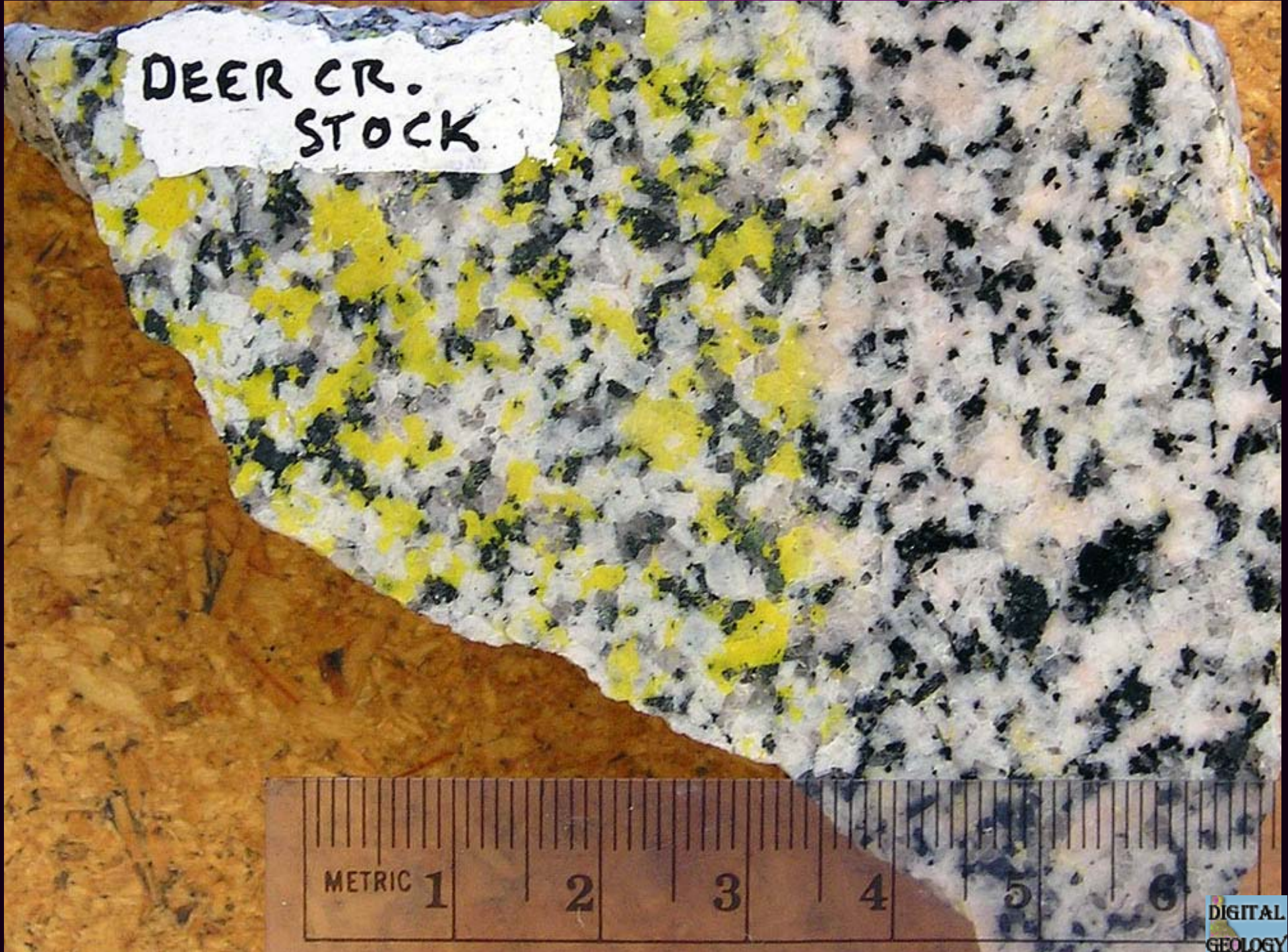




Biotite  
granodiorite from  
the Soldier  
Mountains north  
of Fairfield.  
Yellow stained  
mineral is pink  
potassium  
feldspar. White  
feldspar is  
plagioclase.  
Quartz looks gray.



Thin section of typical biotite granodiorite. South Fork of Boise River.



Granodiorite from the Deer Creek stock northwest of Hailey. Stained for potassium feldspar (yellow) on left side of slab.