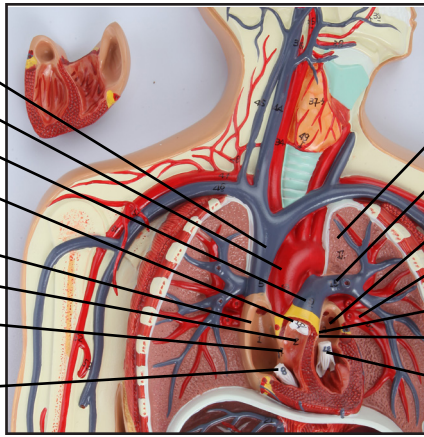


**Axis Scientific Human Circulatory System 1/2 Life Size**

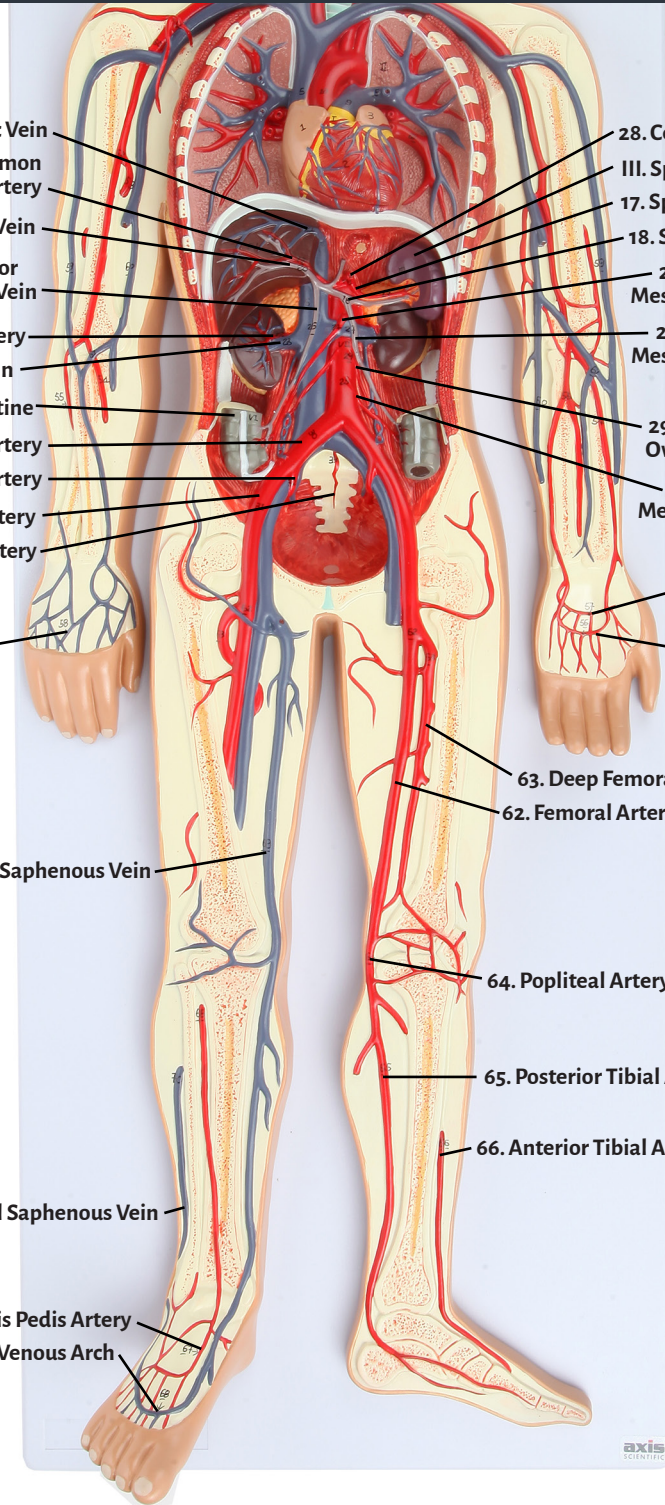
**A-105864**

- 05. Superior Vena Cava
- 13. Ascending Aorta
- 09. Pulmonary Trunk
- 10. Pulmonary (Semilunar) Valve
- 01. Right Atrium
- 02. Right Ventricle
- 07. Interatrial Septum
- 08. Tricuspid (Right Atrioventricular) Valve



- 11. Lung
- 15. Pulmonary Artery
- 03. Left Atrium
- 16. Pulmonary Vein
- 11. Supraventricular Crest
- 14. Aortic (Semilunar) Valve
- 12. Mitral (Left Atrioventricular) Valve

- 21. Hepatic Vein
- 19. Common Hepatic Artery
- 20. Portal Vein
- 26. Superior Mesenteric Vein
- 22. Renal Artery
- 23. Renal Vein
- VI. Large Intestine
- 30. Common Iliac Artery
- 32. Internal Iliac Artery
- 31. External Iliac Artery
- 33. Median Sacral Artery



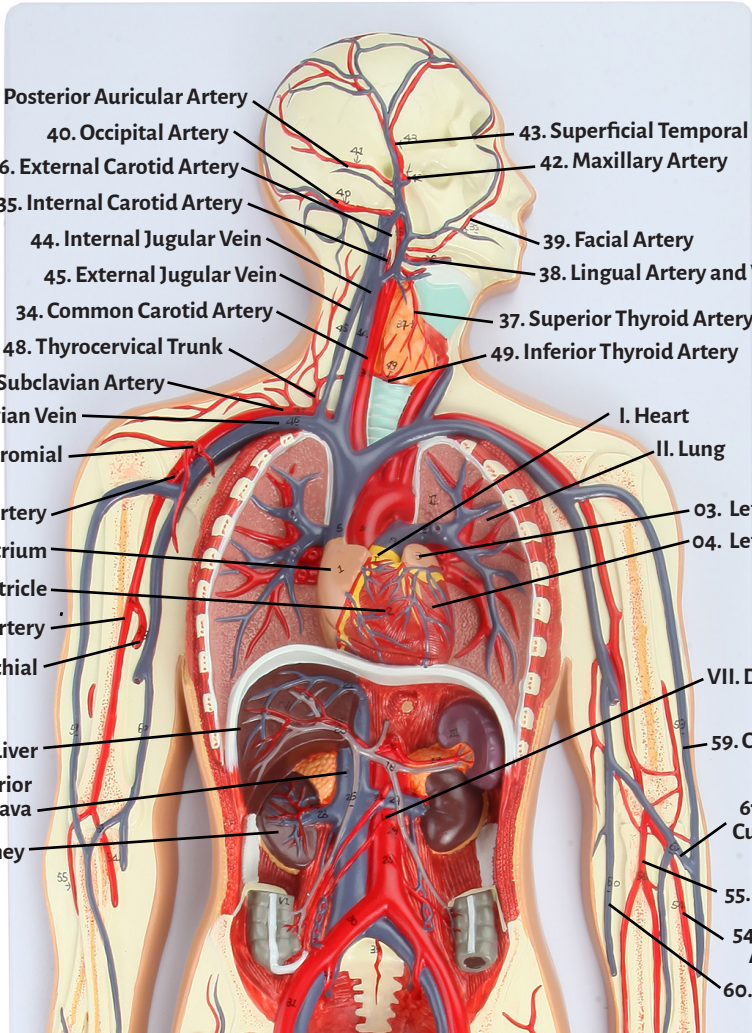
- 28. Celiac Trunk
- III. Spleen
- 17. Splenic Artery
- 18. Splenic Vein
- 24. Superior Mesenteric Artery
- 27. Inferior Mesenteric Vein
- 29. Testicular / Ovarian Artery
- 25. Inferior Mesenteric Artery
- 57. Deep Palmar Arch
- 56. Superficial Palmar Arch

- 58. Dorsal Venous Arch

- 69. Great Saphenous Vein

- 67. Dorsalis Pedis Artery
- 68. Dorsal Venous Arch

- 41. Posterior Auricular Artery
- 40. Occipital Artery
- 36. External Carotid Artery
- 35. Internal Carotid Artery
- 44. Internal Jugular Vein
- 45. External Jugular Vein
- 34. Common Carotid Artery
- 48. Thyrocervical Trunk
- 47. Subclavian Artery
- 46. Subclavian Vein
- 51. Thoracoacromial Artery
- 50. Axillary Artery
- 01. Right Atrium
- 02. Right Ventricle
- 52. Brachial Artery
- 53. Deep Brachial Artery
- IV. Liver
- 06. Inferior Vena Cava
- V. Kidney
- 43. Superficial Temporal Artery
- 42. Maxillary Artery
- 39. Facial Artery
- 38. Lingual Artery and Vein
- 37. Superior Thyroid Artery
- 49. Inferior Thyroid Artery
- I. Heart
- II. Lung
- 03. Left Atrium
- 04. Left Ventricle
- VII. Descending Aorta
- 59. Cephalic Vein
- 61. Median Cubital Vein
- 55. Ulnar Artery
- 54. Radial Artery
- 60. Basilic Vein



- 63. Deep Femoral Artery
- 62. Femoral Artery
- 64. Popliteal Artery
- 65. Posterior Tibial Artery
- 66. Anterior Tibial Artery



01. Right Atrium
02. Right Ventricle
03. Left Atrium
04. Left Ventricle
05. Superior Vena Cava
06. Inferior Vena Cava
07. Interatrial Septum
08. Tricuspid (Right Atrioventricular) Valve
09. Pulmonary Trunk
10. Pulmonary (Semilunar) Valve
11. Supraventricular Crest
12. Mitral (Left Atrioventricular) Valve
13. Ascending Aorta
14. Aortic (Semilunar) Valve
15. Pulmonary Artery
16. Pulmonary Vein
17. Splenic Artery
18. Splenic Vein
19. Common Hepatic Artery
20. Portal Vein
21. Hepatic Vein
22. Renal Artery
23. Renal Vein
24. Superior Mesenteric Artery
25. Inferior Mesenteric Artery
26. Superior Mesenteric Vein
27. Inferior Mesenteric Vein
28. Celiac Trunk
29. Testicular / Ovarian Artery
30. Common Iliac Artery
31. External Iliac Artery
32. Internal Iliac Artery
33. Median Sacral Artery
34. Common Carotid Artery
35. Internal Carotid Artery
36. External Carotid Artery
37. Superior Thyroid Artery
38. Lingual Artery
39. Facial Artery
40. Occipital Artery
41. Posterior Auricular Artery
42. Maxillary Artery
43. Superficial Temporal Artery
44. Internal Jugular Vein
45. External Jugular Vein
46. Subclavian Vein
47. Subclavian Artery
48. Thyrocervical Trunk
49. Inferior Thyroid Artery
50. Axillary Artery
51. Thoracoacromial Artery
52. Brachial Artery
53. Deep Brachial Artery
54. Radial Artery
55. Ulnar Artery
56. Superficial Palmar Arch
57. Deep Palmar Arch
58. Dorsal Venous Arch
59. Cephalic Vein
60. Basilic Vein
61. Median Cubital Vein
62. Femoral Artery
63. Deep Femoral Artery
64. Popliteal Artery
65. Posterior Tibial Artery
66. Anterior Tibial Artery
67. Dorsalis Pedis Artery
68. Dorsal Venous Arch
69. Great Saphenous Vein
70. Small Saphenous Vein
- I. Heart
- II. Lung
- III. Spleen
- IV. Liver
- V. Kidney
- VI. Large Intestine
- VII. Descending Aorta

