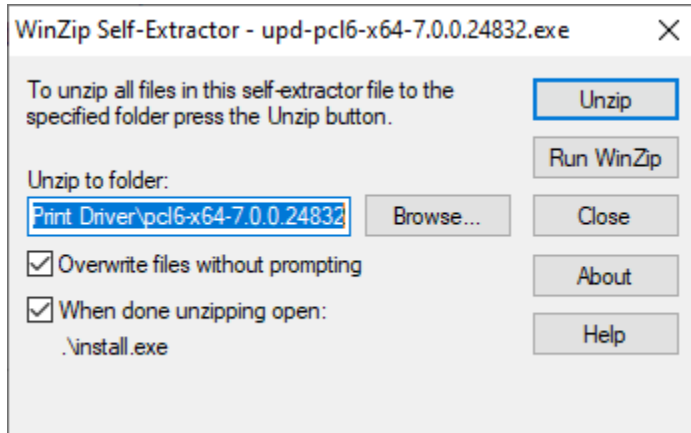


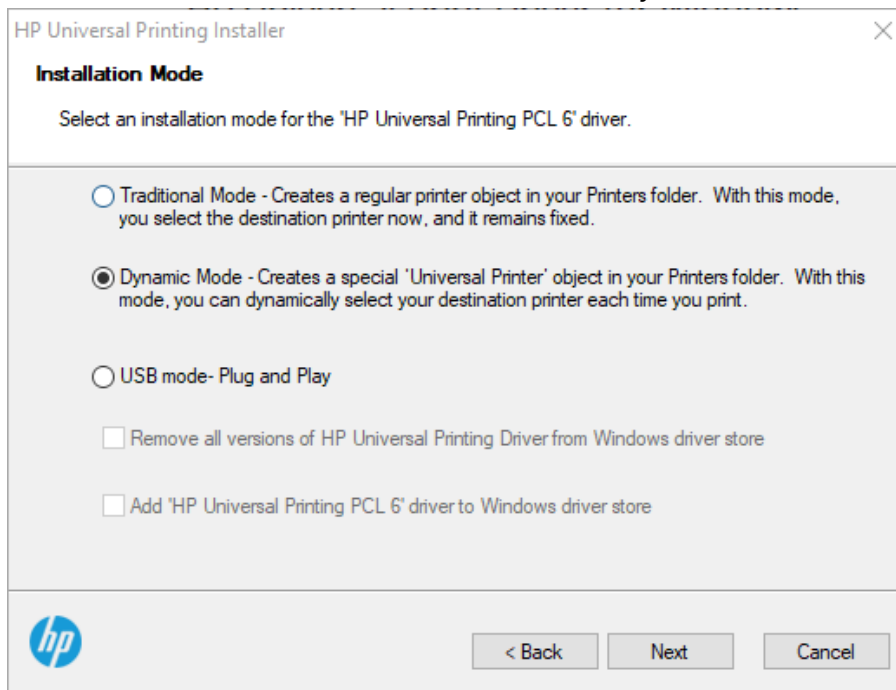
Mapping to the Anthropology Black and White Printer

Windows 10

1. Go to:
<https://support.hp.com/us-en/drivers/selfservice/hp-universal-print-driver-series-for-windows/4157320> and under “Driver-Universal Print Driver (3)” download the “HP Universal Print Driver for Windows PCL6 (64-bit)”.
2. Open the downloaded .exe file and select “Unzip”.

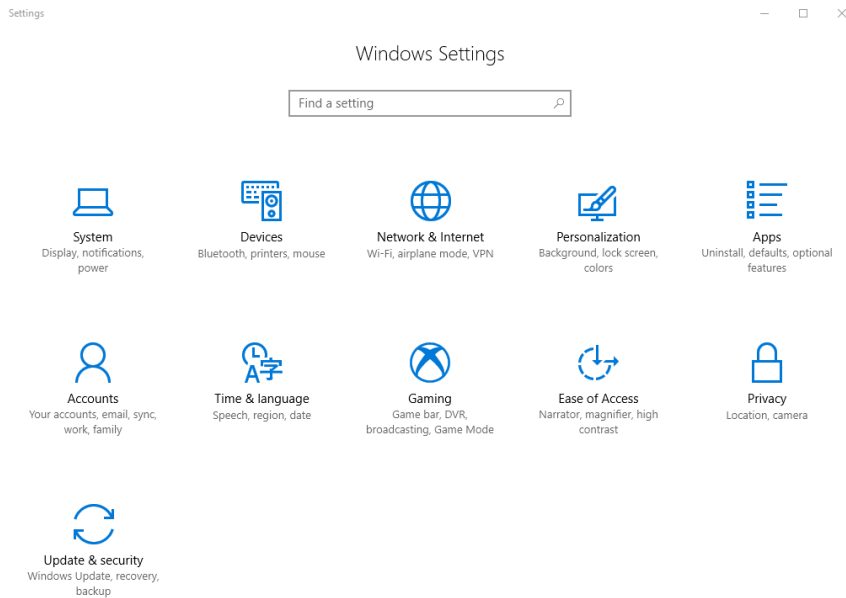


3. Click yes to allow changes to your computer.
4. Accept the terms of the License Agreement.
5. On the “Installation Mode” menu, select “Dynamic Mode” and click next.

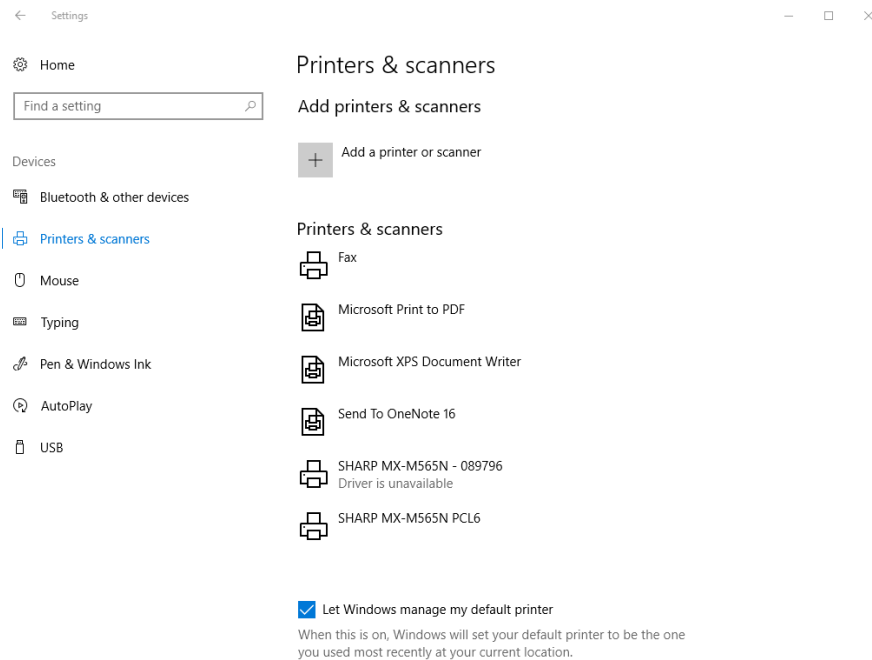


6. Once the installation is complete, hit finish.
7. On the bottom left of your desktop, click on the Windows Start Menu icon.

- Click on the gear icon to open up Windows Settings.
- Click on the “Devices” tab.



- Click on the “Printers & Scanners” tab.



- Click on “Add a printer or scanner.”
- Wait until the option “The printer that I want isn’t listed” appears, then click it.

Printers & scanners

Add printers & scanners



Refresh

Searching for printers and scanners



The printer that I want isn't listed

13. Click on "Add a printer using a TCP/IP address or hostname" checkbox, then click Next.

← Add Printer ×

Find a printer by other options

My printer is a little older. Help me find it.

Select a shared printer by name

Browse...

Example: \\computename\printername or
http://computename/printers/printername/.printer

Add a printer using a TCP/IP address or hostname

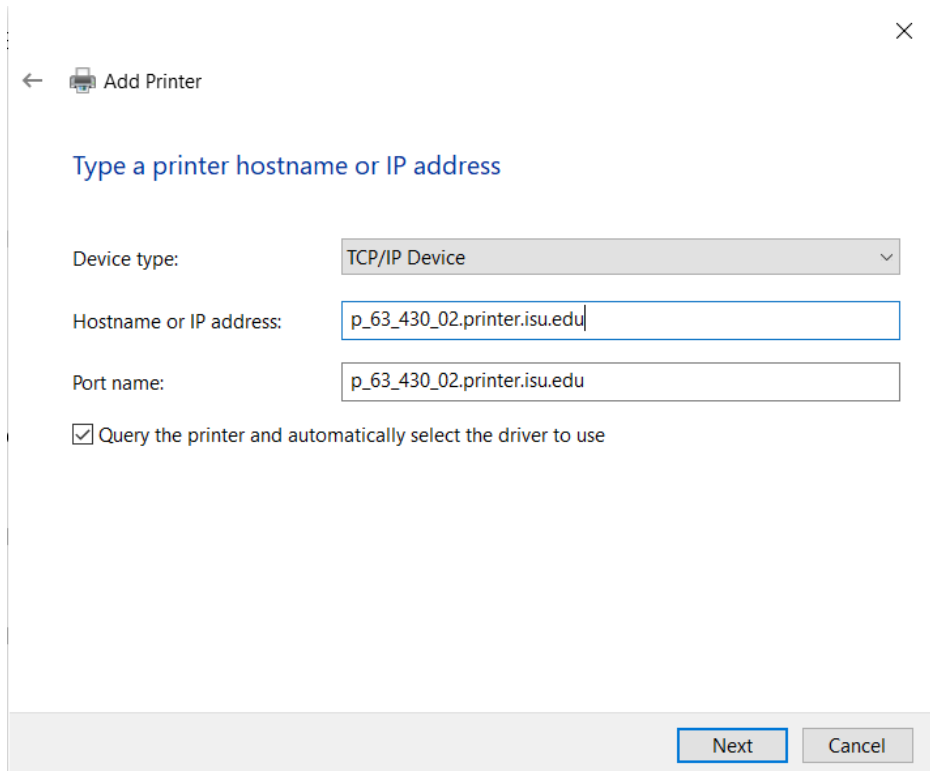
Add a Bluetooth, wireless or network discoverable printer

Add a local printer or network printer with manual settings

Next Cancel

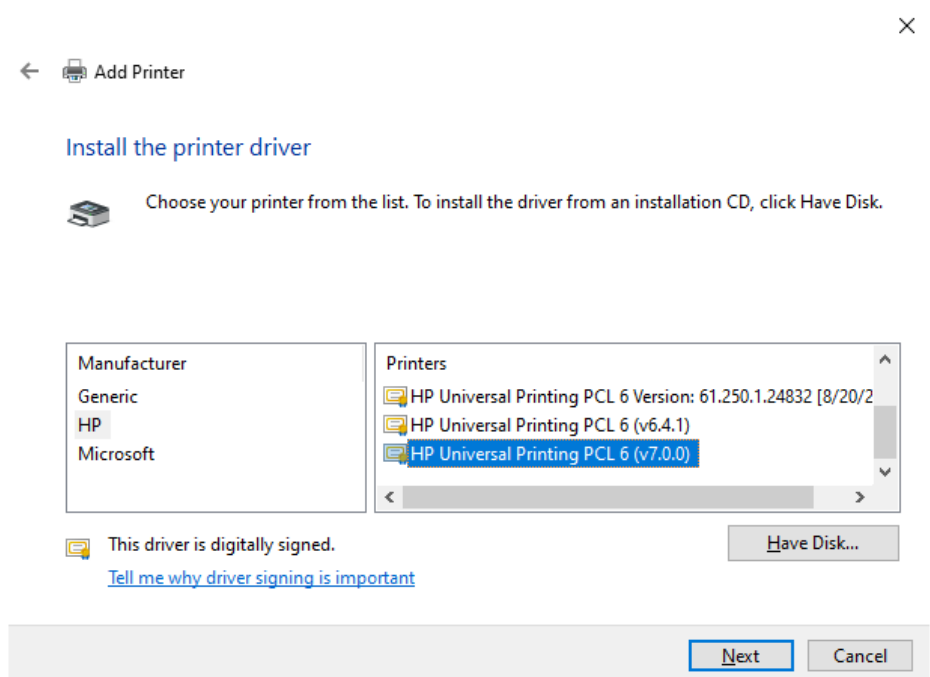
14. Ensure that "Device type" is set to "Autodetect."
15. For the "Hostname or IP address" field, enter in the following DNS name:
The Port name will automatically copy from the Hostname.

HP LaserJet Enterprise 600 M602: **P_15_155_1.printer.isu.edu** or **134.50.15.153**

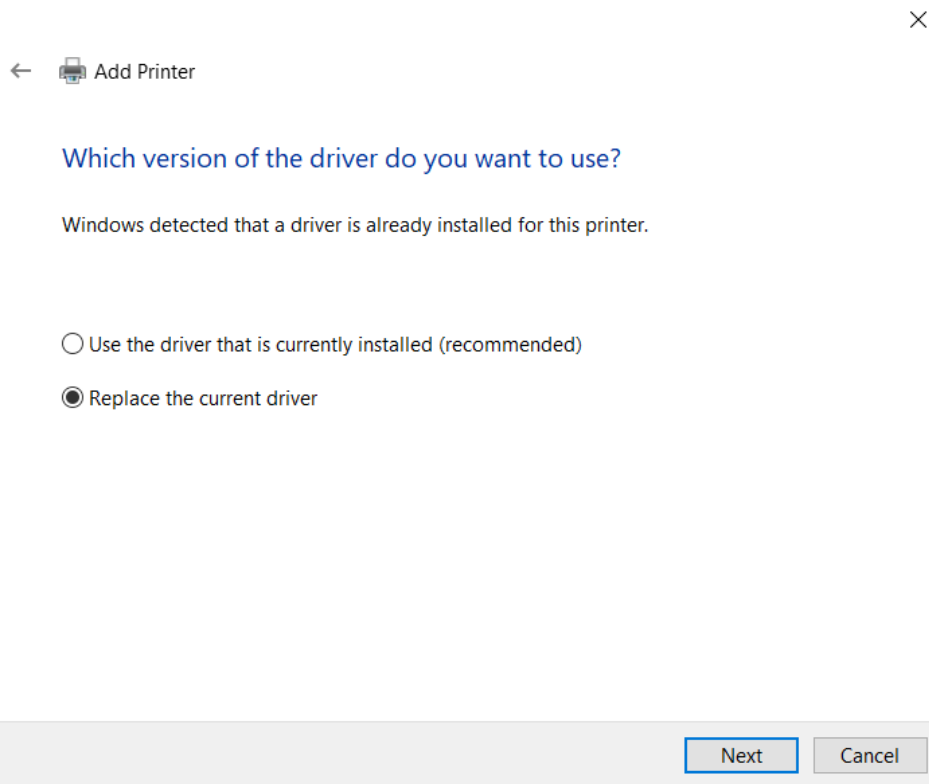


(The hostname used in the picture above is for a different printer. Please use the one listed in step 15)

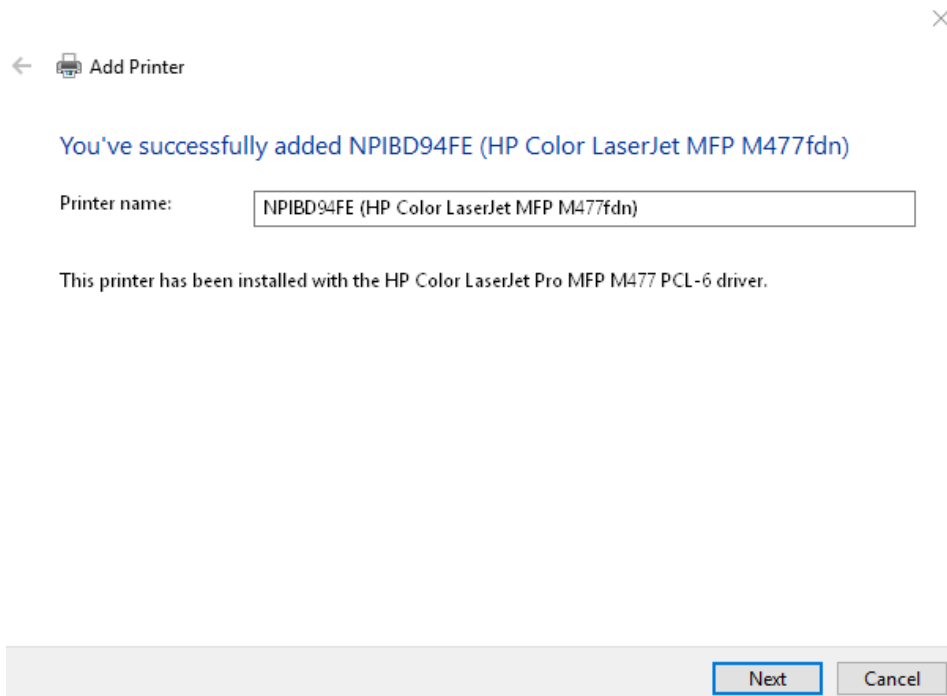
16. If prompted to install the print driver, select HP under manufacturer, and then select "HP Universal Printing PCL 6" and click next. (Your driver may have a different version number)



17. Select "Replace the current driver" and press next.




18. After the printer has been contacted, a similar window to the following will pop up. Feel free to name the printer.



19. Printer sharing is entirely optional. Feel free to use your own judgment here. Click Next when you have completed this step.

×

←  Add Printer

Printer Sharing

If you want to share this printer, you must provide a share name. You can use the suggested name or type a new one. The share name will be visible to other network users.

Do not share this printer

Share this printer so that others on your network can find and use it

Share name:

Location:

Comment:

20. Done! Feel free to print off a test page to confirm the process has completed successfully.